

Mouse Monoclonal Antibody to human IgG

Order Information

Catalog#	20002	
Size/Concentration	100µl	50µl
Price(¥)	1200	800

Description

Monoclonal anti-human IgG is derived from the hybridoma1 produced by the fusion of mouse myeloma cells and splenocytes from an immunized mouse. It is specific for the whole human IgG molecule, has no across action with human IgM molecule as determined by an ELISA. Reactivity is observed with all human IgG subclasses but not with the Fab fragment of human IgG, the antibody site is located in the terminal end of human IgG (part of the Fab fragment), the Fc portion has various important functions such as complement fixation, site for rheumatoid factor.

Specification

clone : 4D2D9G8

WB Predicted band size : 50kDa

Host/Isotype : Mouse IgG1

Storage : Store at 4°C short term. Aliquot and store at -20°C long term. Avoid freeze/thaw cycles.

Species Reactivity : Human

Immunogen : Human IgG was isolated from human sera and purified by chromatography.

Formulation : Purified antibody in PBS containing 0.03% sodium azide.

Application

WB	1/500 - 1/2000
ELISA	1/10000

Call 1-510-860-4615
+86-19375157864
Email Info@ProMab.com
Web www.ProMab.com
www.ProMab.cn

Protocol

WB - www.promab.com/protocol/wb.html
IHC - www.promab.com/protocol/ihc.html
ICC - www.promab.com/protocol/icc.html
HCM - www.promab.com/protocol/hcm.html

Antigen Sequence is available upon request.

Products and Services

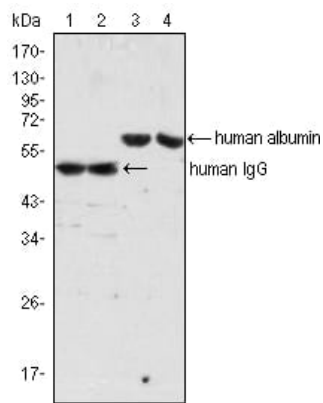
- Mouse Monoclonal Antibody
- Rat Monoclonal Antibody
- Human Antibody
- Hybridoma Sequencing
- Polyclonal Antibody

For Research Only

Application Key:WB - Western Blot | IHC - Immunohistochemistry | ICC - Immunocytochemistry | FCM - Flow Cytometry | ELISA - Enzyme-linked Immunosorbent Assay | IP - Immunoprecipitation

#20002

Mouse Monoclonal Antibody to human IgG



Western blot analysis using IgG mouse mAb (lane 1, 2) and Albumin mouse mAb (lane 3, 4) against human serum (lane 1, 3) and plasma (lane 2, 4).

For Research Only

Application Key: WB - Western Blot | IHC - Immunohistochemistry | ICC - Immunocytochemistry | FCM - Flow Cytometry | ELISA - Enzyme-linked Immunosorbent Assay | IP - Immunoprecipitation

#20002