

# Mouse Monoclonal Antibody to CD4

## Order Information

Catalog#	20007	
Size/Concentration	100µl	50µl
Price(¥)	2180	1280

## Description

The CD4 antigen is highly expressed on human T helper cells and thymocytes, and at lower levels on monocytes and dendritic cells. This integral membrane glycoprotein of approximately 58 kDa contains four external domains (D1 to D4) that show homology to members of the immunoglobulin (Ig) superfamily. It is responsible for the recognition of the MHC class II antigen. The CD4 antibody recognizes most thymocytes and about 65% of peripheral blood T cells.

## Specification

Aliases : CD4mut

Entrez GeneID : 920

Swissprot : P01730

clone : B486A1

Host/Isotype : Mouse IgG1

Antibody Type : Primary antibody

Storage : Store at 4°C short term. Aliquot and store at -20°C long term. Avoid freeze/thaw cycles.

Species Reactivity : Human

Immunogen : Purified recombinant fragment of human CD4 expressed in E. Coli.

Formulation : Purified antibody in PBS containing 0.03% sodium azide.

## Application

FCM	1/200 - 1/400
ELISA	1/10000

## References

1. M Benkirane J Virol. 1995 November; 69(11): 6898-6903.

Call 1-510-860-4615

+86-19375157864

Email [Info@ProMab.com](mailto:Info@ProMab.com)

Web [www.ProMab.com](http://www.ProMab.com)

[www.ProMab.cn](http://www.ProMab.cn)

## Protocol

WB - [www.promab.com/protocol/wb.html](http://www.promab.com/protocol/wb.html)

IHC - [www.promab.com/protocol/ihc.html](http://www.promab.com/protocol/ihc.html)

ICC - [www.promab.com/protocol/icc.html](http://www.promab.com/protocol/icc.html)

HCM - [www.promab.com/protocol/hcm.html](http://www.promab.com/protocol/hcm.html)

**Antigen Sequence** is available upon request.

## Products and Services

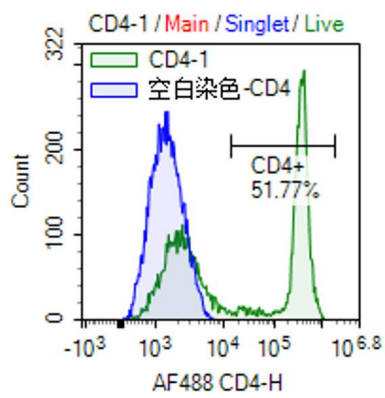
- Mouse Monoclonal Antibody
- Rat Monoclonal Antibody
- Human Antibody
- Hybridoma Sequencing
- Polyclonal Antibody

**For Research Only**

**Application Key:**WB - Western Blot | IHC - Immunohistochemistry | ICC - Immunocytochemistry | FCM - Flow Cytometry | ELISA - Enzyme-linked Immunosorbent Assay | IP - Immunoprecipitation

# #20007

# Mouse Monoclonal Antibody to CD4



Flow cytometric analysis of blood T cells using CD4 mouse mAb (green) and negative control (blue).

**For Research Only**

**Application Key:** WB - Western Blot | IHC - Immunohistochemistry | ICC - Immunocytochemistry | FCM - Flow Cytometry | ELISA - Enzyme-linked Immunosorbent Assay | IP - Immunoprecipitation

#20007