

Mouse Monoclonal Antibody to KSHV K8a

Order Information

Catalog#	20015	
Size/Concentration	100µl	50µl
Price(¥)	2180	1280

Description

Kaposi's sarcoma-associated herpesvirus (KSHV) belongs to the gamma-(2)-herpesvirus subfamily and has been closely linked to the Kaposi

Specification

Aliases : K8

Entrez GeneID : 4961462

clone : 8C12G10G1

Host/Isotype : Mouse IgG2a

Storage : Store at 4°C short term. Aliquot and store at -20°C long term. Avoid freeze/thaw cycles.

Immunogen : Purified recombinant fragment of KSHV K8α expressed in E. Coli.

Formulation : Ascitic fluid containing 0.03% sodium azide.

Application

IHC	1/200 - 1/1000
ELISA	1/10000

References

1. James J et al. Proc. Natl. Acad. Sci Vol. 1996. 93, pp. 14862-14867.

Call 1-510-860-4615

+86-19375157864

Email Info@ProMab.com

Web www.ProMab.com

www.ProMab.cn

Protocol

WB - www.promab.com/protocol/wb.html






IHC - www.promab.com/protocol/ihc.html

ICC - www.promab.com/protocol/icc.html

HCM - www.promab.com/protocol/hcm.html

Antigen Sequence is available upon request.

Products and Services

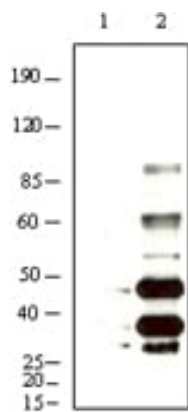
-  Mouse Monoclonal Antibody
-  Rat Monoclonal Antibody
-  Human Antibody
-  Hybridoma Sequencing
-  Polyclonal Antibody

For Research Only

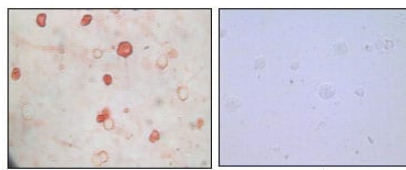
Application Key:WB - Western Blot | IHC - Immunohistochemistry | ICC - Immunocytochemistry | FCM - Flow Cytometry | ELISA - Enzyme-linked Immunosorbent Assay | IP - Immunoprecipitation

#20015

Mouse Monoclonal Antibody to KSHV K8a



Western blot analysis using KSHV K8 mouse mAb against BCBL-1 (1) and TPA induced BCBL-1 (2) cell lysate.



Immunocytochemistry analysis of TPA induced BCBL-1 cells (A) and uninduced BCBL-1 cells (B) using KSHV K8 mouse mAb with AEC staining.

For Research Only

Application Key: WB - Western Blot | IHC - Immunohistochemistry | ICC - Immunocytochemistry | FCM - Flow Cytometry | ELISA - Enzyme-linked Immunosorbent Assay | IP - Immunoprecipitation

#20015