

Mouse Monoclonal Antibody to CD10

Order Information

Catalog#	20022	
Size/Concentration	100µl	50µl
Price(¥)	2180	1280

Description

CD10 is a 100kDa glycoprotein, also designated Common Acute Lymphocytic Leukemia Antigen (CALLA). It is a cell surface enzyme with neutral metalloendopeptidase activity which inactivates a variety of biologically active peptides. CD10 is expressed on the cells of lymphoblastic, Burkitt

Specification

Aliases : CD10
 Entrez GeneID : 4311
 Swissprot : P08473
 clone : 2A1H5E1
 Host/Isotype : Mouse IgG2b
 Storage : Store at 4°C short term. Aliquot and store at -20°C long term. Avoid freeze/thaw cycles.
 Species Reactivity : Human
 Immunogen : Purified recombinant fragment of human CD-10 expressed in E. Coli.
 Formulation : Ascitic fluid containing 0.03% sodium azide.

Application

IHC	1/200 - 1/1000
ELISA	1/10000

References

- 1.Sato Y,et.al. Journal of Gastroenterology,1996 Feb.31(1):12-7.
- 2.Inukai T,et.al. British Journal of Haematology,1995,89(3):623-6.

Call 1-510-860-4615
 +86-19375157864
 Email Info@ProMab.com
 Web www.ProMab.com
 www.ProMab.cn

Protocol

WB - www.promab.com/protocol/wb.html
 IHC - www.promab.com/protocol/ihc.html
 ICC - www.promab.com/protocol/icc.html
 HCM - www.promab.com/protocol/hcm.html
Antigen Sequence is available upon request.

Products and Services

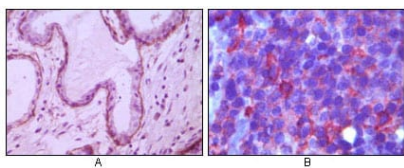
- Mouse Monoclonal Antibody
- Rat Monoclonal Antibody
- Human Antibody
- Hybridoma Sequencing
- Polyclonal Antibody

For Research Only

Application Key:WB - Western Blot | IHC - Immunohistochemistry | ICC - Immunocytochemistry | FCM - Flow Cytometry | ELISA - Enzyme-linked Immunosorbent Assay | IP - Immunoprecipitation

#20022

Mouse Monoclonal Antibody to CD10



Immunohistochemical analysis of paraffin-embedded human breast ductal myoepithelium (A) and lymph tissue (B), showing cytoplasmic (A) and membrane (B) localization using CD10 mouse mAb with DAB staining (A) and AEC staining (B).

For Research Only

Application Key:WB - Western Blot | IHC - Immunohistochemistry | ICC - Immunocytochemistry | FCM - Flow Cytometry | ELISA - Enzyme-linked Immunosorbent Assay | IP - Immunoprecipitation

#20022