

Mouse Monoclonal Antibody to CD3

Order Information

Catalog#	20024	
Size/Concentration	100µl	50µl
Price(¥)	2180	1280

Description

CD3 is a component of T cell surface receptor (TCR), it contains 5 invariable chains: gamma-, delta-, epsilon-, and zeta/eta Clevers et al. (1988) showed the TCR/CD3 complex consists of either a TCR alpha/beta or TCR gamma/delta heterodimer coexpressed at the cell surface with the invariant subunits, CD3 is responsible for the signal transduction of the TCR.

Specification

Aliases : T3Z; CD247

Entrez GeneID : 919

Swissprot : P20963

clone : 4D10A6

Host/Isotype : Mouse IgG2a

Storage : Store at 4°C short term. Aliquot and store at -20°C long term. Avoid freeze/thaw cycles.

Species Reactivity : Human

Immunogen : Purified recombinant fragment of human CD3 expressed in E. Coli.

Formulation : Ascitic fluid containing 0.03% sodium azide.

Application

FCM	1/200 - 1/400
ELISA	1/10000

References

1. Clevers, H. Annu. Rev. Immun. 6:629-662, 1988.

Call 1-510-860-4615

+86-19375157864

Email Info@ProMab.com

Web www.ProMab.com

www.ProMab.cn

Protocol

WB - www.promab.com/protocol/wb.html






IHC - www.promab.com/protocol/ihc.html

ICC - www.promab.com/protocol/icc.html

HCM - www.promab.com/protocol/hcm.html

Antigen Sequence is available upon request.

Products and Services

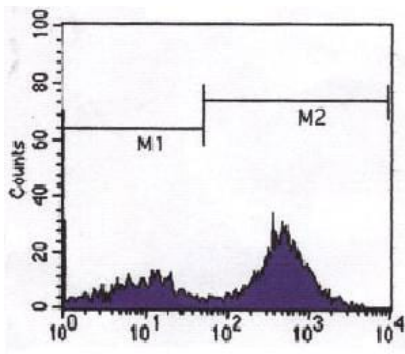
-  Mouse Monoclonal Antibody
-  Rat Monoclonal Antibody
-  Human Antibody
-  Hybridoma Sequencing
-  Polyclonal Antibody

For Research Only

Application Key: WB - Western Blot | IHC - Immunohistochemistry | ICC - Immunocytochemistry | FCM - Flow Cytometry | ELISA - Enzyme-linked Immunosorbent Assay | IP - Immunoprecipitation

#20024

Mouse Monoclonal Antibody to CD3



FCM analysis CD3 expressed in human peripheral blood cells.

For Research Only

Application Key: WB - Western Blot | IHC - Immunohistochemistry | ICC - Immunocytochemistry | FCM - Flow Cytometry | ELISA - Enzyme-linked Immunosorbent Assay | IP - Immunoprecipitation

#20024