

Mouse Monoclonal Antibody to MSH2

Order Information

Catalog#	20025	
Size/Concentration	100µl	50µl
Price(¥)	2180	1280

Description

MSH2 is a 100 kDa nuclear antigen and encodes a protein of 934 amino acids. The MSH2 gene is one of 4 known genes encoding proteins involved in the repair of mismatch nucleotides following DNA replication or repair. Mutations in the MSH2 gene contribute to the development of sporadic colorectal carcinoma. MSHS mutations are responsible for 50% of inherited non-polyposis colorectal (HNPCC). The repair of mismatch DNA is essential to maintaining the integrity of genetic information over time. An alteration of microsatellite repeats is the result of slippage owing to strand misalignment during DNA replication and is referred to as microsatellite instability (MSI). These defects in DNA repair pathways have been related to human carcinogenesis. MSH-2 is involved in the initial cognition of mismatch nucleotides during the replication mismatch repair process.

Specification

Aliases	: FCC1; COCA1; HNPCC; LCFS2
Entrez GeneID	: 4436
Swissprot	: P43246
clone	: 1B3A8A8
WB Predicted band size	: 105kDa
Host/Isotype	: Mouse IgG1
Storage	: Store at 4°C short term. Aliquot and store at -20°C long term. Avoid freeze/thaw cycles.
Species Reactivity	: Human, Monkey
Immunogen	: Purified recombinant fragment of human MSH2 expressed in E. Coli.
Formulation	: Ascitic fluid containing 0.03% sodium azide.

Application

WB	1/500 - 1/2000
IHC	1/200 - 1/1000
ICC	1/200 - 1/1000
ELISA	1/10000

References

1. Papadopoulos, N. 1994. Science 263: 1625-1629.
2. Palombo, F. 1994. Nature 367:417-418.

Call 1-510-860-4615
+86-19375157864
Email Info@ProMab.com
Web www.ProMab.com
www.ProMab.cn

Protocol

WB - www.promab.com/protocol/wb.html
IHC - www.promab.com/protocol/ihc.html
ICC - www.promab.com/protocol/icc.html
HCM - www.promab.com/protocol/hcm.html
Antigen Sequence is available upon request.

Products and Services

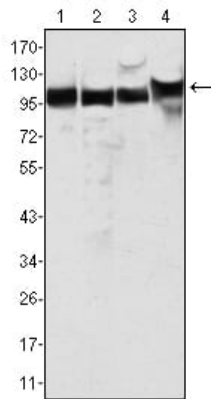
- Mouse Monoclonal Antibody
- Rat Monoclonal Antibody
- Human Antibody
- Hybridoma Sequencing
- Polyclonal Antibody

For Research Only

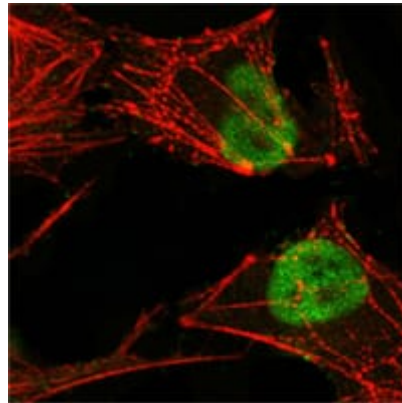
Application Key: WB - Western Blot | IHC - Immunohistochemistry | ICC - Immunocytochemistry | FCM - Flow Cytometry | ELISA - Enzyme-linked Immunosorbent Assay | IP - Immunoprecipitation

#20025

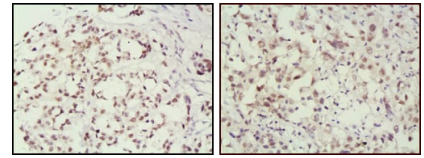
Mouse Monoclonal Antibody to MSH2



Western blot analysis using MSH2 mouse mAb against HeLa (1), A549 (2), A431 (3) and HEK293 (4) cell lysate.



Confocal Immunofluorescence analysis of HeLa cells using MSH2 mouse mAb (green), showing nuclear localization. Red: Actin filaments have been labeled with Alexa Fluor-555 phalloidin.



Immunohistochemical analysis of paraffin-embedded human breast cancer (left) and lung cancer (right) tissues, showing nuclear localization using MSH2 mouse mAb with DAB staining.

For Research Only

Application Key: WB - Western Blot | IHC - Immunohistochemistry | ICC - Immunocytochemistry | FCM - Flow Cytometry | ELISA - Enzyme-linked Immunosorbent Assay | IP - Immunoprecipitation

#20025