

Mouse Monoclonal Antibody to CD19

Order Information

Catalog#	20028	
Size/Concentration	100µl	50µl
Price(¥)	2180	1280

Description

The CD19 antigen (95kDa) is expressed from the earliest stage of B progenitor development, on all peripheral B cells including germinal centre B cells, and all B cell lines and B cell leukaemia tested. T cell and monocytic cell lines are negative and the antigen is lost on B cell maturation to plasma cells. The antigen is a type I integral membrane glycoprotein whose in vitro inhibition will influence B cell activation and proliferation.

Specification

Aliases : B4; MGC12802
 Entrez GeneID : 930
 Swissprot : P15391
 clone : 2E2B6B10
 Host/Isotype : Mouse IgG2b
 Storage : Store at 4°C short term. Aliquot and store at -20°C long term. Avoid freeze/thaw cycles.
 Species Reactivity : Human
 Immunogen : Purified recombinant fragment of human CD19 expressed in E. Coli.
 Formulation : Ascitic fluid containing 0.03% sodium azide.

Application

IHC	1/200 - 1/1000
ELISA	1/10000

References

1. Rie, M.A. de, J. of Immunol. Methods, 1987. 102: 187.
2. Rie, M.A. de, Leukaemia Research, 1988. 12: 135.

Call 1-510-860-4615
 +86-19375157864
 Email Info@ProMab.com
 Web www.ProMab.com
www.ProMab.cn

Protocol

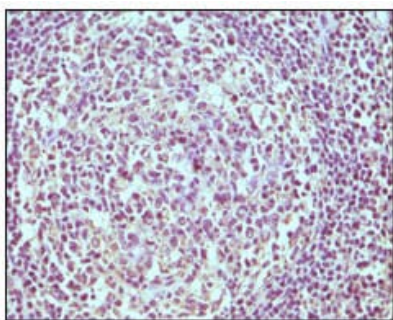
WB - www.promab.com/protocol/wb.html
 IHC - www.promab.com/protocol/ihc.html
 ICC - www.promab.com/protocol/icc.html
 HCM - www.promab.com/protocol/hcm.html

Antigen Sequence is available upon request.

Products and Services

- Mouse Monoclonal Antibody
- Rat Monoclonal Antibody
- Human Antibody
- Hybridoma Sequencing
- Polyclonal Antibody

Mouse Monoclonal Antibody to CD19



Immunohistochemical analysis of paraffin-embedded human normal lymph node, showing cytoplasmic localization using CD19 mouse mAb with DAB staining.

For Research Only

Application Key: WB - Western Blot | IHC - Immunohistochemistry | ICC - Immunocytochemistry | FCM - Flow Cytometry | ELISA - Enzyme-linked Immunosorbent Assay | IP - Immunoprecipitation

#20028