

Mouse Monoclonal Antibody to BSA

Order Information

Catalog#	20029	
Size/Concentration	100µl	50µl
Price(¥)	2180	1280

Description

Bovine serum albumin (BSA) is used in variety of laboratories products which contain BSA as a stabilizer. BSA could be detected for the indication of remains of chemical derivatives from animal products. This antibody is a good reagent that may be used for the development of detection assay in ELISA or western blot to test the remaining BSA for clinical products in Vivo or research products In Vitro.

Specification

clone : 3G3A2

Host/Isotype : Mouse IgG1

Storage : Store at 4°C short term. Aliquot and store at -20°C long term. Avoid freeze/thaw cycles.

Immunogen : Bovine serum albumin.

Formulation : Ascitic fluid containing 0.03% sodium azide.

Application

WB	1/500 - 1/2000
ELISA	1/10000

References

1. Clin Chem 1997,43 (7): 1142-1150.
2. Science 1994,263: 1625-1629.
3. Nature 1994,367: 417-418.

Call 1-510-860-4615
+86-19375157864
Email Info@ProMab.com
Web www.ProMab.com
www.ProMab.cn

Protocol

WB - www.promab.com/protocol/wb.html

IHC - www.promab.com/protocol/ihc.html

ICC - www.promab.com/protocol/icc.html

HCM - www.promab.com/protocol/hcm.html

Antigen Sequence is available upon request.

Products and Services

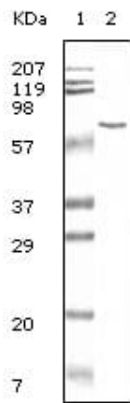
- Mouse Monoclonal Antibody
- Rat Monoclonal Antibody
- Human Antibody
- Hybridoma Sequencing
- Polyclonal Antibody

For Research Only

Application Key:WB - Western Blot | IHC - Immunohistochemistry | ICC - Immunocytochemistry | FCM - Flow Cytometry | ELISA - Enzyme-linked Immunosorbent Assay | IP - Immunoprecipitation

#20029

Mouse Monoclonal Antibody to BSA



Western blot analysis using BSA mouse mAb antibody against BSA.

For Research Only

Application Key: WB - Western Blot | IHC - Immunohistochemistry | ICC - Immunocytochemistry | FCM - Flow Cytometry | ELISA - Enzyme-linked Immunosorbent Assay | IP - Immunoprecipitation

#20029