

Mouse Monoclonal Antibody to KSHV ORF26

Order Information

| | | |
|--------------------|-------|------|
| Catalog# | 20036 | |
| Size/Concentration | 100µl | 50µl |
| Price(¥) | 2180 | 1280 |

Description

Kaposi's sarcoma-associated herpesvirus (KSHV) belongs to the gamma-(2)-herpesvirus subfamily and has been closely linked to the Kaposi

Specification

Aliases : ORF26

Entrez GeneID : 4961509

clone : 2F6B8

Host/Isotype : Mouse IgG1

Storage : Store at 4°C short term. Aliquot and store at -20°C long term. Avoid freeze/thaw cycles.

Species Reactivity : Human

Immunogen : Purified recombinant fragment of KSHV ORF26 expressed in E. Coli.

Formulation : Ascitic fluid containing 0.03% sodium azide.

Application

| | |
|-------|----------------|
| WB | 1/500 - 1/2000 |
| ELISA | 1/10000 |

References

1. James J . Proc. Natl. Acad. Sci Vol. 1996. 93, pp. 14862-14867.






Call 1-510-860-4615
+86-19375157864
Email Info@ProMab.com
Web www.ProMab.com
www.ProMab.cn

Protocol

WB - www.promab.com/protocol/wb.html
IHC - www.promab.com/protocol/ihc.html
ICC - www.promab.com/protocol/icc.html
HCM - www.promab.com/protocol/hcm.html

Antigen Sequence is available upon request.

Products and Services

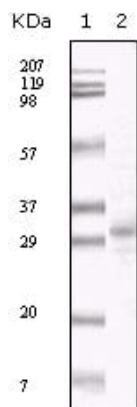
-  Mouse Monoclonal Antibody
-  Rat Monoclonal Antibody
-  Human Antibody
-  Hybridoma Sequencing
-  Polyclonal Antibody

For Research Only

Application Key:WB - Western Blot | IHC - Immunohistochemistry | ICC - Immunocytochemistry | FCM - Flow Cytometry | ELISA - Enzyme-linked Immunosorbent Assay | IP - Immunoprecipitation

#20036

Mouse Monoclonal Antibody to KSHV ORF26



Western blot analysis using KSHV ORF26 mouse mAb against TPA induced BCBL-1 cell lysate.

For Research Only

Application Key: WB - Western Blot | IHC - Immunohistochemistry | ICC - Immunocytochemistry | FCM - Flow Cytometry | ELISA - Enzyme-linked Immunosorbent Assay | IP - Immunoprecipitation

#20036