

# Mouse Monoclonal Antibody to PR

## Order Information

Catalog#	20107	
Size/Concentration	100µl	50µl
Price(¥)	2180	1280

## Description

PR(progesterone receptor), with 933-amino acid protein (about 110kDa), a member of the steroid receptor superfamily, mediates the physiologic effects of progesterone, PR is mediated by two functionally different isoforms of the progesterone receptor, the full length PR-B and the short form PR-A. The PR-A and PR-B proteins are 94 kDa and 114 kDa respectively. That are equimolar in the normal breast but dysregulated in advanced disease. PR is prognostic markers in breast cancers irrespective of the patient's progestational status Human progesterone.

## Specification

Aliases : PR; NR3C3; PGR

Entrez GeneID : 5241

Swissprot : P06401

clone : 2F12B4

Host/Isotype : Mouse IgG1

Storage : Store at 4°C short term. Aliquot and store at -20°C long term. Avoid freeze/thaw cycles.

Species Reactivity : Human

Immunogen : Purified recombinant fragment of PR expressed in E. Coli.

Formulation : Ascitic fluid containing 0.03% sodium azide.

## Application

IHC	1/200 - 1/1000
ELISA	1/10000

## References

1. McGuire, W.L., et al. 1986. Cancer.Surv.5:527-536.
2. Helena CD, Curt WB, Paul V,et al. 2000. J.Clin. Pathol. 53:201-205.
3. Wen, D.X., et al. 1994.Mol.Cell.Biol.14:8356-8364.
4. GM Clark, CK Osborne, WL McGuire.1984.J. Clin. Oncol., 2:1102-1109.

Call 1-510-860-4615  
+86-19375157864  
Email [Info@ProMab.com](mailto:Info@ProMab.com)  
Web [www.ProMab.com](http://www.ProMab.com)  
[www.ProMab.cn](http://www.ProMab.cn)

## Protocol

WB - [www.promab.com/protocol/wb.html](http://www.promab.com/protocol/wb.html)

IHC - [www.promab.com/protocol/ihc.html](http://www.promab.com/protocol/ihc.html)

ICC - [www.promab.com/protocol/icc.html](http://www.promab.com/protocol/icc.html)

HCM - [www.promab.com/protocol/hcm.html](http://www.promab.com/protocol/hcm.html)

**Antigen Sequence** is available upon request.

## Products and Services

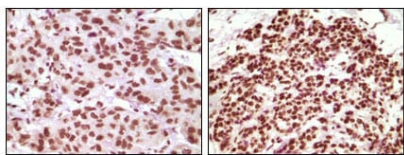
- Mouse Monoclonal Antibody
- Rat Monoclonal Antibody
- Human Antibody
- Hybridoma Sequencing
- Polyclonal Antibody

**For Research Only**

**Application Key:**WB - Western Blot | IHC - Immunohistochemistry | ICC - Immunocytochemistry | FCM - Flow Cytometry | ELISA - Enzyme-linked Immunosorbent Assay | IP - Immunoprecipitation

# #20107

## Mouse Monoclonal Antibody to PR



Immunohistochemical analysis of paraffin-embedded human infiltrating ductal carcinoma tissue(left) and simple carcinoma of breast cancer tissue(right), showing nuclear localization using PR mouse mAb with DAB staining.

**For Research Only**

**Application Key:**WB - Western Blot | IHC - Immunohistochemistry | ICC - Immunocytochemistry | FCM - Flow Cytometry | ELISA - Enzyme-linked Immunosorbent Assay | IP - Immunoprecipitation

#20107