

Mouse Monoclonal Antibody to C-Kit

Order Information

Catalog#	20121	
Size/Concentration	100µl	50µl
Price(¥)	2180	1280

Description

C-kit (CD117, 145kDa) functions as a tyrosine kinase receptor which becomes activated upon binding of its ligand SCF (stem-cell factor), the C-kit gene encodes the human homolog of the proto-oncogene c-kit, which was first identified as the cellular homolog of the feline sarcoma viral oncogene v-kit. KIT is a type 3 transmembrane receptor for MGF (mast cell growth factor). Mutations in KIT are associated with gastrointestinal stromal tumors, mast cell disease, acute myelogenous leukemia, and piebaldism.

Specification

Aliases : PBT; SCFR; C-Kit; CD117; KIT

Entrez GeneID : 3815

Swissprot : P10721

clone : 8D7

WB Predicted band size : 145kDa

Host/Isotype : Mouse IgG1

Storage : Store at 4°C short term. Aliquot and store at -20°C long term. Avoid freeze/thaw cycles.

Species Reactivity : Human

Immunogen : Purified recombinant fragment of C-kit expressed in E. Coli.

Formulation : Ascitic fluid containing 0.03% sodium azide.

Application

IHC	1/200 - 1/1000
ELISA	1/10000

References

1. Mojica WD et.al.Histopathology. 2005 Nov;47(5):517-22.
2. Tong WD et.al.Int J Colorectal Dis. 2005 Jul;20(4):363-7. Epub 2005 Feb 2.
3. Nakai Y et.al.Biochem Biophys Res Commun. 2005 Nov 11;337(1):289-96.

Call 1-510-860-4615

+86-19375157864

Email Info@ProMab.com

Web www.ProMab.com

www.ProMab.cn

Protocol

WB - www.promab.com/protocol/wb.html

IHC - www.promab.com/protocol/ihc.html

ICC - www.promab.com/protocol/icc.html

HCM - www.promab.com/protocol/hcm.html

Antigen Sequence is available upon request.

Products and Services

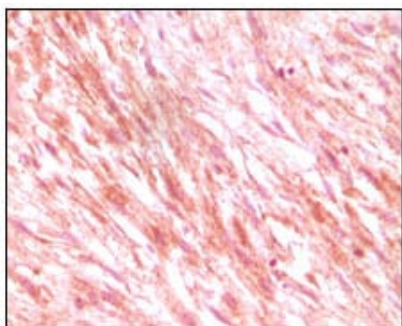
- Mouse Monoclonal Antibody
- Rat Monoclonal Antibody
- Human Antibody
- Hybridoma Sequencing
- Polyclonal Antibody

For Research Only

Application Key:WB - Western Blot | IHC - Immunohistochemistry | ICC - Immunocytochemistry | FCM - Flow Cytometry | ELISA - Enzyme-linked Immunosorbent Assay | IP - Immunoprecipitation

#20121

Mouse Monoclonal Antibody to C-Kit



Immunohistochemical analysis of paraffin-embedded human malignant mesenchymoma tissues, showing cytoplasmic localization using C-kit mouse mAb with DAB staining.

For Research Only

Application Key: WB - Western Blot | IHC - Immunohistochemistry | ICC - Immunocytochemistry | FCM - Flow Cytometry | ELISA - Enzyme-linked Immunosorbent Assay | IP - Immunoprecipitation

#20121