

Mouse Monoclonal Antibody to LYN

Order Information

Catalog#	20123	
Size/Concentration	100µl	50µl
Price(¥)	2180	1280

Description

Lyn (also known as p53/56 Lyn) is a membrane-associated protein tyrosine kinase (PTK) mostly expressed in hemopoietic cells which is important in cellular signaling. It contains an SH2 and SH3 domain and has been found to be cleaved after activation of caspases in apoptosis. A member of the Src family of PTKs, there are two known isoforms for Lyn which plays an indispensable role in the Fc epsilon RI (FceR1) and the B-cell IgM receptor signaling pathway and is essential for Syk activation and Lat phosphorylation after FceR1 aggregation and can also phosphorylate Tec on multiple residues. Lyn can also be regulated by IL-2 and IL-3. Lyn is a member of the src family of non-receptor protein tyrosine kinases that is predominantly expressed in haematopoietic tissues. Like all members of the src family, lyn is thought to participate in signal transduction from cell surface receptors that lack intrinsic tyrosine kinase activity. It is associated with a number of cell surface receptors including the B cell antigen receptor and immunoglobulin E receptor (FceRI).

Specification

Aliases : JTK8; FLJ26625

Entrez GeneID : 4067

Swissprot : P07948

clone : 2H8D7

WB Predicted band size : 56kDa

Host/Isotype : Mouse IgG2b

Storage : Store at 4°C short term. Aliquot and store at -20°C long term. Avoid freeze/thaw cycles.

Species Reactivity : Human

Immunogen : Purified recombinant fragment of LYN expressed in E. Coli.

Formulation : Ascitic fluid containing 0.03% sodium azide.

Application

WB	1/500 - 1/2000
ELISA	1/10000

References

1. Sakaguchi, A.Y., et al. Genet. 34: 175.
2. Hibbs, M.L., et al. Biol. 29: 397-400.
3. Williams, J.C., et al. Trends Biochem. Sci. 23: 179-184.

Call 1-510-860-4615

+86-19375157864

Email Info@ProMab.com

Web www.ProMab.com

www.ProMab.cn

Protocol

WB - www.promab.com/protocol/wb.html

IHC - www.promab.com/protocol/ihc.html

ICC - www.promab.com/protocol/icc.html

HCM - www.promab.com/protocol/hcm.html

Antigen Sequence is available upon request.

Products and Services

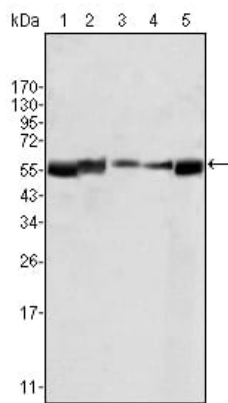
- Mouse Monoclonal Antibody
- Rat Monoclonal Antibody
- Human Antibody
- Hybridoma Sequencing
- Polyclonal Antibody

For Research Only

Application Key: WB - Western Blot | IHC - Immunohistochemistry | ICC - Immunocytochemistry | FCM - Flow Cytometry | ELISA - Enzyme-linked Immunosorbent Assay | IP - Immunoprecipitation

#20123

Mouse Monoclonal Antibody to LYN



Western blot analysis using LYN mouse mAb againsts HL60 (1), L540 (2), SLLP-M2 (3), SEM (4) and Ramos (5) cell lysate.

For Research Only

Application Key: WB - Western Blot | IHC - Immunohistochemistry | ICC - Immunocytochemistry | FCM - Flow Cytometry | ELISA - Enzyme-linked Immunosorbent Assay | IP - Immunoprecipitation

#20123