

Mouse Monoclonal Antibody to HER-2

Order Information

| | | |
|--------------------|-------|------|
| Catalog# | 20127 | |
| Size/Concentration | 100µl | 50µl |
| Price(¥) | 2180 | 1280 |

Description

The C-erbB-2 (HER-2/neu) gene encodes a member of the epidermal growth factor (EGF) receptor family of receptor tyrosine kinases. Amplification or overexpression of this gene has been reported in numerous cancers, including breast and ovarian tumors. High levels of c-erbB-2 were associated with estrogen receptor (ER) and progesterone receptor negativity. Overexpression of the c-erbB-2 oncogene has been shown to be associated with poor prognosis in ovarian and breast cancer. The level of increased Neu expression can be a predictor of disease prognosis.

Specification

| | |
|----------------------|--|
| Aliases : | HER-2, C-erbB-2, erbB-2 |
| Entrez GeneID : | 2064 |
| Swissprot : | P04626 |
| clone : | 9B9D8 |
| Host/Isotype : | Mouse IgG2b |
| Storage : | Store at 4°C short term. Aliquot and store at -20°C long term. Avoid freeze/thaw cycles. |
| Species Reactivity : | Human |
| Immunogen : | Purified recombinant fragment of HER-2 expressed in E. Coli. |
| Formulation : | Ascitic fluid containing 0.03% sodium azide. |

Application

| | |
|-------|----------------|
| IHC | 1/200 - 1/1000 |
| ELISA | 1/10000 |

References

1. RR Mehta, JH McDermott, TJ Hieken, et al. J. Clin. Oncol. 1998;16:2409 - 2416.
2. Hideko Y, Vered S, and Daniel F.H, et al. J. Clin. Oncol.2001;19:2334 - 2356.
3. Magali F, Kamel H, C

Call 1-510-860-4615
+86-19375157864
Email Info@ProMab.com
Web www.ProMab.com
www.ProMab.cn

Protocol

WB - www.promab.com/protocol/wb.html
IHC - www.promab.com/protocol/ihc.html
ICC - www.promab.com/protocol/icc.html
HCM - www.promab.com/protocol/hcm.html
Antigen Sequence is available upon request.

Products and Services

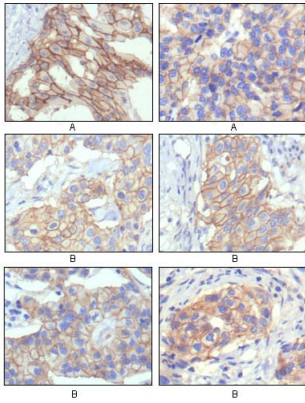
- Mouse Monoclonal Antibody
- Rat Monoclonal Antibody
- Human Antibody
- Hybridoma Sequencing
- Polyclonal Antibody

For Research Only

Application Key:WB - Western Blot | IHC - Immunohistochemistry | ICC - Immunocytochemistry | FCM - Flow Cytometry | ELISA - Enzyme-linked Immunosorbent Assay | IP - Immunoprecipitation

#20127

Mouse Monoclonal Antibody to HER-2



Immunohistochemical analysis of paraffin-embedded human breast intraductal carcinoma tissue(A) and breast infiltrating ductal carcinoma tissue(B) showing membrane localization using HER-2 mouse mAb with DAB staining.

For Research Only

Application Key:WB - Western Blot | IHC - Immunohistochemistry | ICC - Immunocytochemistry | FCM - Flow Cytometry | ELISA - Enzyme-linked Immunosorbent Assay | IP - Immunoprecipitation

#20127