

Mouse Monoclonal Antibody to Thioredoxin (TRX)

Order Information

Catalog#	20128	
Size/Concentration	100µl	50µl
Price(¥)	1320	780

Description

Thioredoxin (TRX) is a small ubiquitous protein (MW12kDa) which exist in a wide variety of prokaryotic and eukaryotic cells. Trx contains a redox active disulfide/dithiol group within the conserved Cys-Gly-Pro-Cys active site. This antibody is suitable for detecting fusion proteins which encode a Trx-Tag by immunoblotting and immunoprecipitation. The Monoclonal Antibody can detect a little Trx-Tag fusion proteins with negligible cross-reactivity with bacterial, insect, or mammalian lysates.

Specification

Aliases : Thioredoxin

clone : 1H6H6

WB Predicted band size : 12kDa

Host/Isotype : Mouse IgG1

Antibody Type : Tag Antibody

Storage : Store at 4°C short term. Aliquot and store at -20°C long term. Avoid freeze/thaw cycles.

Species Reactivity : Tag

Immunogen : Purified recombinant fusion protein with Thioredoxin (TRX) tag.

Formulation : Ascitic fluid containing 0.03% sodium azide.

Application

WB	1/500 - 1/2000
IHC	1/100 - 1/1000
ICC	1/100-1/200
FCM	1/200 - 1/400
ELISA	1/10000

References

- Holmgren, A. et al., Annu. Rev. Biochem. 54, 237-271 (1985).
- Wollman, E. E. et al., J. Biol. Chem. 263, 15506-15512 (1988).
- Sasada, T. et al., J. Toxicol. Sci. 21, 285-287 (1996).

Call 1-510-860-4615

+86-19375157864

Email Info@ProMab.com

Web www.ProMab.com

www.ProMab.cn

Protocol

WB - www.promab.com/protocol/wb.html

IHC - www.promab.com/protocol/ihc.html

ICC - www.promab.com/protocol/icc.html

HCM - www.promab.com/protocol/hcm.html

Antigen Sequence is available upon request.

Products and Services

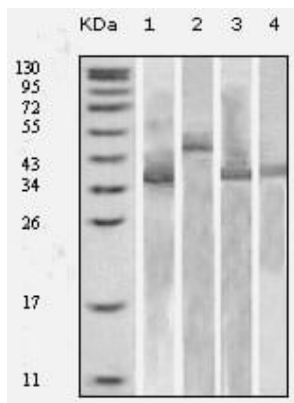
- Mouse Monoclonal Antibody
- Rat Monoclonal Antibody
- Human Antibody
- Hybridoma Sequencing
- Polyclonal Antibody

For Research Only

Application Key:WB - Western Blot | IHC - Immunohistochemistry | ICC - Immunocytochemistry | FCM - Flow Cytometry | ELISA - Enzyme-linked Immunosorbent Assay | IP - Immunoprecipitation

#20128

Mouse Monoclonal Antibody to Thioredoxin (TRX)



Western blot analysis using Trx mouse mAb against various fusion protein with Trx tag.

For Research Only

Application Key: WB - Western Blot | IHC - Immunohistochemistry | ICC - Immunocytochemistry | FCM - Flow Cytometry | ELISA - Enzyme-linked Immunosorbent Assay | IP - Immunoprecipitation

#20128