

# Mouse Monoclonal Antibody to GSK3 alpha

## Order Information

Catalog#	20133	
Size/Concentration	100µl	50µl
Price(¥)	2180	1280

## Description

Glycogen synthase kinase 3 alpha belongs to the Ser/Thr family of protein kinases, Cdc2/cdkx subfamily; GSK3 subfamily. It is implicated in the hormonal control of several regulatory proteins including glycogen synthase, myb, and the transcription factor c jun. GSK3 phosphorylates glycogen synthase and thereby inactivates it. Insulin stimulates the dephosphorylation of glycogen synthase at the sites phosphorylated by GSK3 and subsequently inhibits GSK3 acutely leading to the stimulation of glycogen synthesis. GSK3 signaling is performed by two isoforms, GSK3 alpha and GSK3 beta. The two isoforms share 97% sequence similarity within their catalytic domains. GSK3 has also been shown to play a role in protein synthesis, cell adhesion, cell proliferation, cell differentiation, microtubule dynamics and cell motility.

## Specification

Aliases : DKFZp686D0638; GSK3A

Entrez GeneID : 2931

Swissprot : P49840

clone : 9D5G1

Host/Isotype : Mouse IgG1

Storage : Store at 4°C short term. Aliquot and store at -20°C long term. Avoid freeze/thaw cycles.

Species Reactivity : Human

Immunogen : Purified recombinant fragment of GSK3 alpha expressed in E. Coli.

Formulation : Ascitic fluid containing 0.03% sodium azide.

## Application

WB	1/500 - 1/2000
ICC	1/200 - 1/1000
ELISA	1/10000

## References

1. Mendez P, Garcia-Segura LM. Endocrinology. 2006 Jun;147(6):3027-39. Epub 2006 Feb 23.
2. Bianchi M, De Lucchini S, et, al. Biochem J. 2005 Oct 15;391(Pt 2):359-70.
3. De Servi B, Hermani A, Medunjanin S, Mayer D. Oncogene. 2005 Jul 21;24(31):4946-55.

Call 1-510-860-4615

+86-19375157864

Email [Info@ProMab.com](mailto:Info@ProMab.com)

Web [www.ProMab.com](http://www.ProMab.com)

[www.ProMab.cn](http://www.ProMab.cn)

## Protocol

WB - [www.promab.com/protocol/wb.html](http://www.promab.com/protocol/wb.html)

IHC - [www.promab.com/protocol/ihc.html](http://www.promab.com/protocol/ihc.html)

ICC - [www.promab.com/protocol/icc.html](http://www.promab.com/protocol/icc.html)

HCM - [www.promab.com/protocol/hcm.html](http://www.promab.com/protocol/hcm.html)

**Antigen Sequence** is available upon request.

## Products and Services

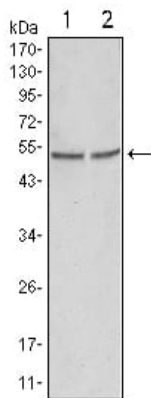
- Mouse Monoclonal Antibody
- Rat Monoclonal Antibody
- Human Antibody
- Hybridoma Sequencing
- Polyclonal Antibody

**For Research Only**

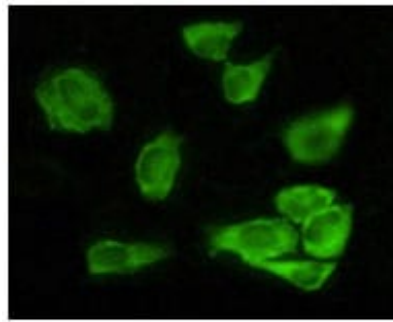
**Application Key:** WB - Western Blot | IHC - Immunohistochemistry | ICC - Immunocytochemistry | FCM - Flow Cytometry | ELISA - Enzyme-linked Immunosorbent Assay | IP - Immunoprecipitation

# #20133

# Mouse Monoclonal Antibody to GSK3 alpha



Western blot analysis using GSK3 alpha mouse mAb against HeLa (1) and PC-3 cell lysate.



Immunofluorescence analysis of HeLa cells using GSK3 alpha mouse mAb showing cytoplasmic localization.

**For Research Only**

**Application Key:** WB - Western Blot | IHC - Immunohistochemistry | ICC - Immunocytochemistry | FCM - Flow Cytometry | ELISA - Enzyme-linked Immunosorbent Assay | IP - Immunoprecipitation

#20133