

Mouse Monoclonal Antibody to TYRO3

Order Information

Catalog#	20135	
Size/Concentration	100µl	50µl
Price(¥)	2180	1280

Description

Tyrosine-protein kinase (TYRO3) belongs to the Tyr protein kinase family (AXL/UFO subfamily). The UFO family of receptor tyrosine kinases is comprised of subfamily members Rse(also referred to as Tyro3 or Sky) and UFO (also called Tyro7 or Axl). Two distinct isoforms of Rse, designated Brt and Etk-2, have been described. Brt differs from Rse at its C-terminus, but more importantly lacks the N-terminal 31 amino acid signal peptide sequence present in Rse, which is replaced by a 27 amino acid Brt-specific sequence. It has been suggested that as a result of this alternative splicing event, Brt resides in the cytoplasm, unlike Rse which is expressed on the cell surface. Etk-2 also lacks an N-terminal signal peptide which is substituted with a 45 amino acid Etk-2-specific sequence. Protein kinases mediate most of the signal transduction in eukaryotic cells, regulating cellular metabolism, transcription, cell cycle progression, cytoskeletal rearrangement and cell movement, apoptosis, and differentiation.

Specification

Aliases : BYK; Brt; Dtk; RSE; Sky; Tif; FLJ16467

Entrez GeneID : 7301

Swissprot : Q06418

clone : 1C10E8

Host/Isotype : Mouse IgG1

Storage : Store at 4°C short term. Aliquot and store at -20°C long term. Avoid freeze/thaw cycles.

Species Reactivity : Human

Immunogen : Purified recombinant fragment of TYRO3 expressed in E. Coli.

Formulation : Ascitic fluid containing 0.03% sodium azide.

Application

ICC	1/200 - 1/1000
ELISA	1/10000

References

1. Janssen, J.W.G., et al. 1991. Oncogene 6: 2113-2120.
2. Schlessinger, J., et al. 1992. Neuron 9: 383-391.
3. Biesecker, L.G., et al. 1995. Oncogene 10: 2239-2242.

Call 1-510-860-4615
+86-19375157864
Email Info@ProMab.com
Web www.ProMab.com
www.ProMab.cn

Protocol

WB - www.promab.com/protocol/wb.html
IHC - www.promab.com/protocol/ihc.html
ICC - www.promab.com/protocol/icc.html
HCM - www.promab.com/protocol/hcm.html

Antigen Sequence is available upon request.

Products and Services

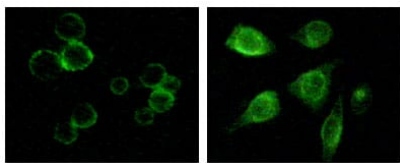
- Mouse Monoclonal Antibody
- Rat Monoclonal Antibody
- Human Antibody
- Hybridoma Sequencing
- Polyclonal Antibody

For Research Only

Application Key:WB - Western Blot | IHC - Immunohistochemistry | ICC - Immunocytochemistry | FCM - Flow Cytometry | ELISA - Enzyme-linked Immunosorbent Assay | IP - Immunoprecipitation

#20135

Mouse Monoclonal Antibody to TYRO3



Immunofluorescence staining of methanol-fixed MCF-7 and HepG2 cells showing membrane and cytoplasmic localization.

For Research Only

Application Key: WB - Western Blot | IHC - Immunohistochemistry | ICC - Immunocytochemistry | FCM - Flow Cytometry | ELISA - Enzyme-linked Immunosorbent Assay | IP - Immunoprecipitation

#20135