

Mouse Monoclonal Antibody to Cytokeratin 5

Order Information

Catalog#	20142	
Size/Concentration	100µl	50µl
Price(¥)	2180	1280

Description

CK5 (keratin 5) is a member of the keratin gene family. Biochemically, most members of the CK family fall into one of two classes, type I (acidic polypeptides) and type II (basic polypeptides). The type II cytokeratins consist of basic or neutral proteins which are arranged in pairs of heterotypic keratin chains coexpressed during differentiation of simple and stratified epithelial tissues. This type II cytokeratin is specifically expressed in the basal layer of the epidermis with family member KRT14. The type II cytokeratins are clustered in a region of chromosome 12q12-q13. At least one member of the acidic family and one member of the basic family is expressed in all epithelial cells. Cytokeratin 5 is expressed in normal basal cells. Mutations of the Cytokeratin5 gene (KRT5) have been shown to result in the autosomal dominant disorder epidermolysis bullosa (EB). Defects in KRT5 are a cause of epidermolysis bullosa simplex.

Specification

Aliases : K5; DDD; EBS2; KRT5A; KRT5

Entrez GeneID : 3852

Swissprot : P13647

clone : 3E2F1

Host/Isotype : Mouse IgG1

Storage : Store at 4°C short term. Aliquot and store at -20°C long term. Avoid freeze/thaw cycles.

Species Reactivity : Human

Immunogen : Purified recombinant fragment of CK5 expressed in E. Coli.

Formulation : Ascitic fluid containing 0.03% sodium azide.

Application

IHC	1/200 - 1/1000
ELISA	1/10000

References

1. Canedo-Patzi AM, Leon-Bojorge B, de Ortiz-Hidalgo C. Gac Med Mex. 2006, Jan-Feb, 142(1):59-66. Spanish.
2. Leibl S, Moinfar F. Am J Surg Pathol. 2006, Apr, 30(4):450-6.

Call 1-510-860-4615
+86-19375157864
Email Info@ProMab.com
Web www.ProMab.com
www.ProMab.cn

Protocol

WB - www.promab.com/protocol/wb.html
IHC - www.promab.com/protocol/ihc.html
ICC - www.promab.com/protocol/icc.html
HCM - www.promab.com/protocol/hcm.html

Antigen Sequence is available upon request.

Products and Services

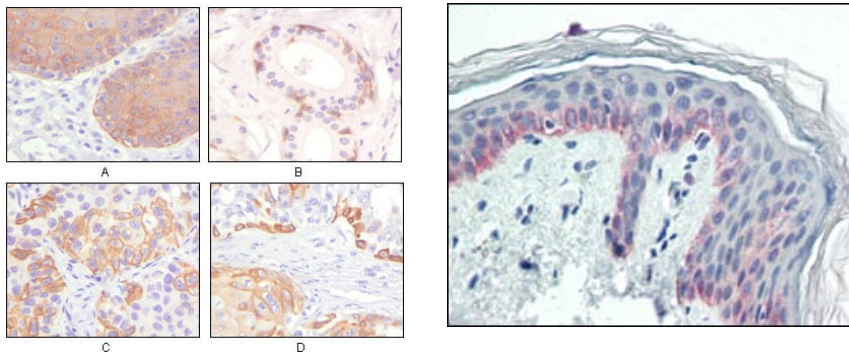
- Mouse Monoclonal Antibody
- Rat Monoclonal Antibody
- Human Antibody
- Hybridoma Sequencing
- Polyclonal Antibody

For Research Only

Application Key: WB - Western Blot | IHC - Immunohistochemistry | ICC - Immunocytochemistry | FCM - Flow Cytometry | ELISA - Enzyme-linked Immunosorbent Assay | IP - Immunoprecipitation

#20142

Mouse Monoclonal Antibody to Cytokeratin 5



Immunohistochemical analysis of paraffin-embedded human esophagus epithelium (A), salivary gland basal cell (B), lung squamous cell carcinoma (C), endometrium adenosquamous carcinoma (D), showing cytoplasmic and membrane localization using CK5 mouse mAb with DAB staining.

Immunohistochemical analysis of paraffin-embedded human skin tissues using CK5 mouse mAb.

For Research Only

Application Key: WB - Western Blot | IHC - Immunohistochemistry | ICC - Immunocytochemistry | FCM - Flow Cytometry | ELISA - Enzyme-linked Immunosorbent Assay | IP - Immunoprecipitation

#20142