

Mouse Monoclonal Antibody to Cytokeratin (Pan)

Order Information

Catalog#	20143	
Size/Concentration	100µl	50µl
Price(¥)	2180	1280

Call 1-510-860-4615
+86-19375157864
Email Info@ProMab.com
Web www.ProMab.com
www.ProMab.cn

Description

Biochemically, most members of the CK family fall into one of two classes, type I (acidic polypeptides) and type II (basic polypeptides). The type II cytokeratins consist of basic or neutral proteins which are arranged in pairs of heterotypic keratin chains coexpressed during differentiation of simple and stratified epithelial tissues. Cytokeratins comprise a diverse group of intermediate filament proteins (IFPs) that are expressed as pairs in both keratinized and non-keratinized epithelial tissue. Cytokeratins play a critical role in differentiation and tissue specialization and function to maintain the overall structural integrity of epithelial cells. Cytokeratins have been found to be useful markers of tissue differentiation which is directly applicable to the characterization of malignant tumors.

Specification

Aliases : K5; DDD; EBS2; KRT5A; KRT5
Entrez GeneID : 3852
Swissprot : P13647
clone : 7H8C4
Host/Isotype : Mouse IgG1
Storage : Store at 4°C short term. Aliquot and store at -20°C long term. Avoid freeze/thaw cycles.
Species Reactivity : Human
Immunogen : Purified recombinant fragment of CK5 expressed in E. Coli.
Formulation : Purified antibody in PBS with 0.05% sodium azide.

Application

IHC	1/200 - 1/1000
ICC	1/200 - 1/1000
ELISA	1/10000

References

1. Scope A. Schwendenwein I. Frommlet F. Vet Rec. 2006, Dec 16, 159(25): 839-43.
2. Somjen D. Katzburg S. Posner GH. et al. J Cell Biochem. 2007, Apr 15, 100(6): 1406-14.

Protocol

WB - www.promab.com/protocol/wb.html
IHC - www.promab.com/protocol/ihc.html
ICC - www.promab.com/protocol/icc.html
HCM - www.promab.com/protocol/hcm.html
Antigen Sequence is available upon request.

Products and Services

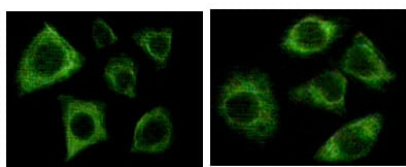
- Mouse Monoclonal Antibody
- Rat Monoclonal Antibody
- Human Antibody
- Hybridoma Sequencing
- Polyclonal Antibody

For Research Only

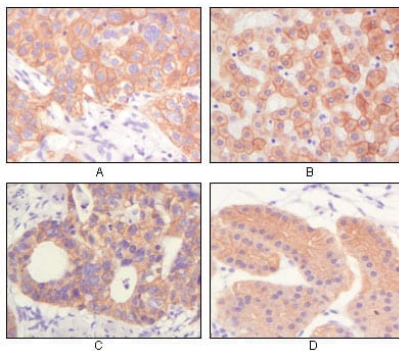
Application Key:WB - Western Blot | IHC - Immunohistochemistry | ICC - Immunocytochemistry | FCM - Flow Cytometry | ELISA - Enzyme-linked Immunosorbent Assay | IP - Immunoprecipitation

#20143

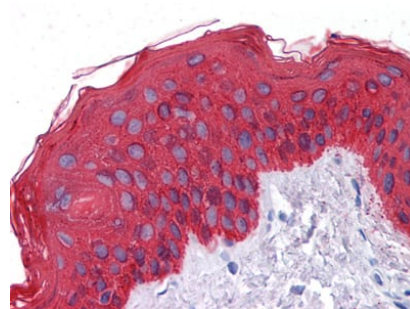
Mouse Monoclonal Antibody to Cytokeratin (Pan)



Immunofluorescence staining of methanol-fixed Eca-109 (left) and HepG2 (right) cells showing cytoplasmic localization.



Immunohistochemical analysis of paraffin-embedded human lung squamous cell carcinoma (A), normal hepatocyte (B), colon adenocarcinoma, normal stomach tissue (D), showing cytoplasmic and membrane localization using CK mouse mAb with DAB staining.



Immunohistochemical analysis of paraffin-embedded human Skin tissues using CK mouse mAb

For Research Only

Application Key: WB - Western Blot | IHC - Immunohistochemistry | ICC - Immunocytochemistry | FCM - Flow Cytometry | ELISA - Enzyme-linked Immunosorbent Assay | IP - Immunoprecipitation

#20143