

Mouse Monoclonal Antibody to GFP Tag

Order Information

Catalog#	20144	
Size/Concentration	100µl	50µl
Price(¥)	1320	780

Description

GFP (Green fluorescence protein) is a 27 kDa protein derived from the jellyfish *Aequorea victoria*, which emits green light when excited by blue light. GFP cDNA produces a fluorescent product when expressed in prokaryotic cells, without the need for exogenous substrates or cofactors. GFP has become an invaluable tool in cell biology research, since its intrinsic fluorescence can be visualized in living cells. GFP fluorescence is stable under fixation conditions and suitable for a variety of applications. GFP has been widely used as a reporter for gene expression, enabling researchers to visualize and localize GFP-tagged proteins within living cells without the need for chemical staining. Other applications of GFP include assessment of protein-protein interactions through the yeast two hybrid system and measurement of distance between proteins through fluorescence energy transfer (FRET) protocols. GFP technology has considerably contributed to a greater understanding of cellular physiology.

Specification

Swissprot : P42212

clone : 4B10B2

WB Predicted band size : 27kDa

Host/Isotype : Mouse IgG2a

Antibody Type : Tag Antibody

Storage : Store at 4°C short term. Aliquot and store at -20°C long term. Avoid freeze/thaw cycles.

Species Reactivity : Tag

Immunogen : Purified recombinant fragment of GFP expressed in E. Coli.

Formulation : Purified antibody in PBS containing 0.03% sodium azide.

Application

WB	1/500-1/1000
IHC	1/200 - 1/1000
ICC	1/100-1/200
FCM	1/200 - 1/400
ELISA	1/10000

References

1. Proc Natl Acad Sci U S A. 2006, Jul 25,103(30):11399-404.
2. Gene Expr Patterns. 2007, Jan,7(1-2):124-30.
3. Eur J Cell Biol. 2006, Sep,85(9-10):1059-68.

Call 1-510-860-4615

+86-19375157864

Email Info@ProMab.com

Web www.ProMab.com

www.ProMab.cn

Protocol

WB - www.promab.com/protocol/wb.html

IHC - www.promab.com/protocol/ihc.html

ICC - www.promab.com/protocol/icc.html

HCM - www.promab.com/protocol/hcm.html

Antigen Sequence is available upon request.

Products and Services

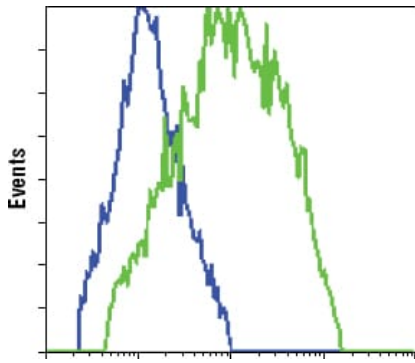
- Mouse Monoclonal Antibody
- Rat Monoclonal Antibody
- Human Antibody
- Hybridoma Sequencing
- Polyclonal Antibody

For Research Only

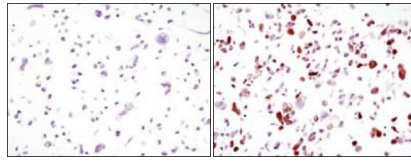
Application Key:WB - Western Blot | IHC - Immunohistochemistry | ICC - Immunocytochemistry | FCM - Flow Cytometry | ELISA - Enzyme-linked Immunosorbent Assay | IP - Immunoprecipitation

#20144

Mouse Monoclonal Antibody to GFP Tag



Flow cytometric analysis of HCC827 cells, untransfected (blue) or transfected with GFP (green), using GFP mouse mAb .



Immunocytochemistry analysis of HCC827 cells, untransfected (left) or transfected with GFP (right) using GFP mouse mAb .

For Research Only

Application Key: WB - Western Blot | IHC - Immunohistochemistry | ICC - Immunocytochemistry | FCM - Flow Cytometry | ELISA - Enzyme-linked Immunosorbent Assay | IP - Immunoprecipitation

#20144