

# Mouse Monoclonal Antibody to FES

## Order Information

Catalog#	20146	
Size/Concentration	100µl	50µl
Price(¥)	2180	1280

## Description

FES (feline sarcoma oncogene) and Fer are the only two members of a unique family of cytoplasmic protein tyrosine kinases. FES and Fer contain a central Src homology-2 (SH2) domain and a carboxy-terminal tyrosine kinase catalytic domain. They are structurally distinguished from other members of cytoplasmic protein tyrosine kinase subfamilies by the presence of amino-terminal Fer/CIP4 homology and coiled-coil domains. FES was originally identified as an oncogene from avian and feline retroviruses. Human c-Fes has been implicated in myeloid, vascular endothelial and neuronal cell differentiation. FES has tyrosine-specific protein kinase activity and that activity is required for maintenance of cellular transformation. Mutations may activate the FES kinase and thereby contribute to cancer. However, recent data strongly suggests that the c-FES protein-tyrosine kinase is a tumor suppressor rather than a dominant oncogene in colorectal cancer.

## Specification

Aliases : FPS

Entrez GeneID : 2242

Swissprot : P07332

clone : 2E3G3

Host/Isotype : Mouse IgG1

Storage : Store at 4°C short term. Aliquot and store at -20°C long term. Avoid freeze/thaw cycles.

Species Reactivity : Human

Immunogen : Purified recombinant fragment of FES (AA:613-822) expressed in E. Coli.

Formulation : Ascitic fluid containing 0.03% sodium azide.

## Application

IHC	1/200 - 1/1000
ELISA	1/10000

## References

1. Delfino FJ, Stevenson H, Smithgall TE. J Biol Chem. 2006, Mar 31, 281(13): 8829-35. Epub 2006 Feb 2.
2. Durfee WK, Rivard A. J Biomech Eng. 2005, Nov, 127(6):1014-9.
3. Vitenzon AS, Mironov EM, Petrushanskaya KA. Neurosci Behav Physiol. 2005, Sep, 35(7):709-14.

Call 1-510-860-4615

+86-19375157864

Email [Info@ProMab.com](mailto:Info@ProMab.com)

Web [www.ProMab.com](http://www.ProMab.com)

[www.ProMab.cn](http://www.ProMab.cn)

## Protocol

WB - [www.promab.com/protocol/wb.html](http://www.promab.com/protocol/wb.html)

IHC - [www.promab.com/protocol/ihc.html](http://www.promab.com/protocol/ihc.html)

ICC - [www.promab.com/protocol/icc.html](http://www.promab.com/protocol/icc.html)

HCM - [www.promab.com/protocol/hcm.html](http://www.promab.com/protocol/hcm.html)

**Antigen Sequence** is available upon request.

## Products and Services

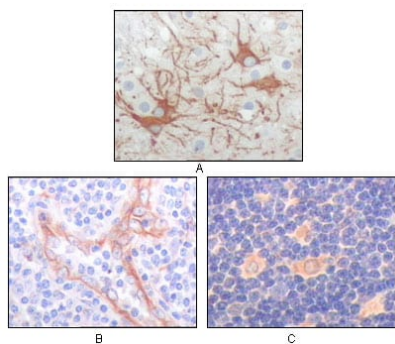
- Mouse Monoclonal Antibody
- Rat Monoclonal Antibody
- Human Antibody
- Hybridoma Sequencing
- Polyclonal Antibody

**For Research Only**

**Application Key:** WB - Western Blot | IHC - Immunohistochemistry | ICC - Immunocytochemistry | FCM - Flow Cytometry | ELISA - Enzyme-linked Immunosorbent Assay | IP - Immunoprecipitation

# #20146

## Mouse Monoclonal Antibody to FES



Immunohistochemical analysis of paraffin-embedded human cerebrum tumor (A), endothelium of vessel (B), lymphocyte of thymus(C), showing cytoplasmic localization using FES mouse mAb with DAB staining.

**For Research Only**

**Application Key:**WB - Western Blot | IHC - Immunohistochemistry | ICC - Immunocytochemistry | FCM - Flow Cytometry | ELISA - Enzyme-linked Immunosorbent Assay | IP - Immunoprecipitation

#20146