

# Mouse Monoclonal Antibody to PRAK

## Order Information

Catalog#	20147	
Size/Concentration	100µl	50µl
Price(¥)	2180	1280

## Description

PRAK (p38-regulated /activated kinase), also referred to as mitogen-activated protein kinase (MAPK)-activated protein kinase (MAPKAPK)-5, is an ubiquitously expressed serine/threonine kinase regulated by p38a and p38

## Specification

Aliases : PRAK; MAPKAPK5

Entrez GeneID : 8550

Swissprot : Q8IW41

clone : 7H10B4

Host/Isotype : Mouse IgG1

Storage : Store at 4°C short term. Aliquot and store at -20°C long term. Avoid freeze/thaw cycles.

Species Reactivity : Human

Immunogen : Purified recombinant fragment of PRAK expressed in E. Coli.

Formulation : Ascitic fluid containing 0.03% sodium azide.

## Application

IHC	1/200 - 1/1000
ELISA	1/10000

## References

1. Paliga AJ. Natale DR. Watson AJ. Biol Cell. 2005, Aug, 97(8):629-40.
2. Wijtten PJ. Prak R. Lemme A. et al. Br Poult Sci. 2004, Aug, 45(4):504-11.
3. New L. Jiang Y. Han J. Mol Biol Cell. 2003, Jun, 14(6):2603-16. Epub 2003 Mar 20.

Call 1-510-860-4615  
+86-19375157864  
Email [Info@ProMab.com](mailto:Info@ProMab.com)  
Web [www.ProMab.com](http://www.ProMab.com)  
[www.ProMab.cn](http://www.ProMab.cn)

## Protocol

WB - [www.promab.com/protocol/wb.html](http://www.promab.com/protocol/wb.html)

IHC - [www.promab.com/protocol/ihc.html](http://www.promab.com/protocol/ihc.html)

ICC - [www.promab.com/protocol/icc.html](http://www.promab.com/protocol/icc.html)

HCM - [www.promab.com/protocol/hcm.html](http://www.promab.com/protocol/hcm.html)

**Antigen Sequence** is available upon request.

## Products and Services

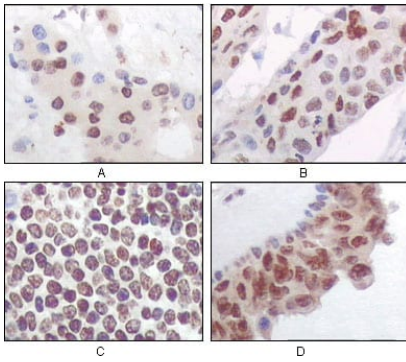
- Mouse Monoclonal Antibody
- Rat Monoclonal Antibody
- Human Antibody
- Hybridoma Sequencing
- Polyclonal Antibody

**For Research Only**

**Application Key:**WB - Western Blot | IHC - Immunohistochemistry | ICC - Immunocytochemistry | FCM - Flow Cytometry | ELISA - Enzyme-linked Immunosorbent Assay | IP - Immunoprecipitation

# #20147

## Mouse Monoclonal Antibody to PRAK



Immunohistochemical analysis of paraffin-embedded human liver carcinoma (A), esophagus carcinoma (B), normal spleen tissue(C), breast carcinoma (D), showing nuclear and cytoplasmic localization using PRAK mouse mAb with DAB staining.

**For Research Only**

**Application Key:**WB - Western Blot | IHC - Immunohistochemistry | ICC - Immunocytochemistry | FCM - Flow Cytometry | ELISA - Enzyme-linked Immunosorbent Assay | IP - Immunoprecipitation

#20147