

Mouse Monoclonal Antibody to IGF1R-Beta

Order Information

| | | |
|--------------------|-------|------|
| Catalog# | 20149 | |
| Size/Concentration | 100µl | 50µl |
| Price(¥) | 2180 | 1280 |

Description

IGF1R(insulin-like growth factor 1 receptor), a transmembrane receptor tyrosine kinase, is widely expressed in many cell types within fetal and postnatal tissues, and in many cell lines. Upon binding to its ligands, IGF-I and IGF-II, receptor autophosphorylation occurs. The triple tyrosine cluster within the kinase domain (Tyr1131, Tyr1135 and Tyr1136) is the earliest major site of autophosphorylation. Phosphorylation of these three tyrosine residues is necessary for kinase activation. Insulin receptors (IRs) share significant similarity with IGF1 receptors in both structure and function, including an equivalent triple tyrosine cluster within the activation loop of the kinase domain (Tyr1146, Tyr1150 and Tyr1151). Tyrosine autophosphorylation of insulin receptor is one of the earliest cellular responses to insulin stimulation. Autophosphorylation begins with phosphorylation of Tyr1146 and either Tyr1150 or Tyr1151. Full kinase activation requires the triple tyrosine phosphorylation.

Specification

Aliases : IGF1R

Entrez GeneID : 3480

Swissprot : P08069

clone : 3G5C1

WB Predicted band size : 96kDa

Host/Isotype : Mouse IgG2a

Storage : Store at 4°C short term. Aliquot and store at -20°C long term. Avoid freeze/thaw cycles.

Species Reactivity : Human

Immunogen : Purified recombinant fragment of IGF1R-Beta (AA: 1101-1367) expressed in E. Coli.

Formulation : Ascitic fluid containing 0.03% sodium azide.

Application

| | |
|-------|----------------|
| IHC | 1/200 - 1/1000 |
| ELISA | 1/10000 |

References

1. Zhu Z, Jiang W, Thompson HJ. Carcinogenesis. 2003, Jul, 24(7):1225-31. Epub 2003 May 9.
2. Ling Y, Maile LA, Clemmons DR. Mol Endocrinol. 2003, Sep, 17(9):1824-33. Epub 2003 Jun 5.

Call 1-510-860-4615
+86-19375157864
Email Info@ProMab.com
Web www.ProMab.com
www.ProMab.cn

Protocol

WB - www.promab.com/protocol/wb.html
IHC - www.promab.com/protocol/ihc.html
ICC - www.promab.com/protocol/icc.html
HCM - www.promab.com/protocol/hcm.html

Antigen Sequence is available upon request.

Products and Services

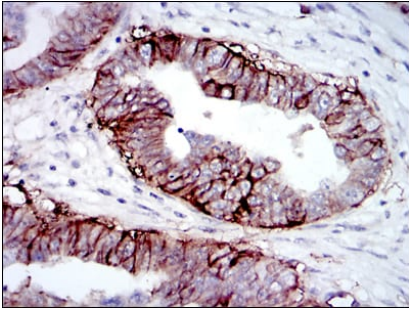
- Mouse Monoclonal Antibody
- Rat Monoclonal Antibody
- Human Antibody
- Hybridoma Sequencing
- Polyclonal Antibody

For Research Only

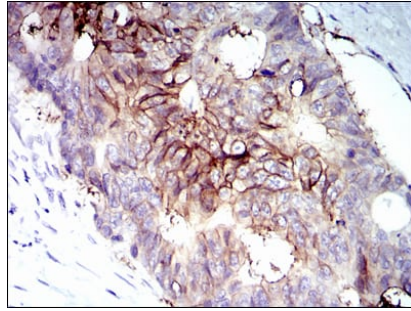
Application Key: WB - Western Blot | IHC - Immunohistochemistry | ICC - Immunocytochemistry | FCM - Flow Cytometry | ELISA - Enzyme-linked Immunosorbent Assay | IP - Immunoprecipitation

#20149

Mouse Monoclonal Antibody to IGF1R-Beta



Immunohistochemical analysis of paraffin-embedded human ovarian cancer tissues using IGF1R-Beta mouse mAb with DAB staining.



Immunohistochemical analysis of paraffin-embedded human rectum cancer tissues using IGF1R-Beta mouse mAb with DAB staining.

For Research Only

Application Key: WB - Western Blot | IHC - Immunohistochemistry | ICC - Immunocytochemistry | FCM - Flow Cytometry | ELISA - Enzyme-linked Immunosorbent Assay | IP - Immunoprecipitation

#20149