

Mouse Monoclonal Antibody to SORL1

Order Information

Catalog#	20150	
Size/Concentration	100µl	50µl
Price(¥)	2180	1280

Description

SORL1 (sortilin-related receptor, L A repeats containing) also known as sorting protein-related receptor containing LDLR class A (SorLA), is a Type I membrane protein that may be involved in cell-cell interaction. SorLA, a single transmembrane receptor, binds LDL and transports it into cells by endocytosis. SorLA is synthesized as a proreceptor which is processed to the mature form by a furin-like propeptidase. It can also bind to RAP (receptor-associated protein). SorLA is a multifunctional endocytosis receptor important in lipoprotein and protease uptake. The N-terminal propeptide, which is removed, can be cleaved by furin or homologous proteases. Endogenous SorLA binds the neuropeptide head activator (HA) and is important for HA signaling and function. The gene encoding for the protein maps to chromosome 8p23.1. SorLA is expressed mainly in brain (cerebral cortex, cerebellum and the occipital pole), but can also be found in liver, spinal cord, kidney, testis and pancreas.

Specification

Aliases : SORL1

Entrez GeneID : 6653

Swissprot : Q92673

clone : 3B6B11

Host/Isotype : Mouse IgG1

Storage : Store at 4°C short term. Aliquot and store at -20°C long term. Avoid freeze/thaw cycles.

Species Reactivity : Human

Immunogen : Purified recombinant fragment of human SORL1 expressed in E. Coli.

Formulation : Ascitic fluid containing 0.03% sodium azide.

Application

IHC	1/200 - 1/1000
ICC	1/200 - 1/1000
ELISA	1/10000

References

1. Scherzer CR. Offe K. Gearing M. et al. Arch Neurol. 2004, Aug, 61(8):1200-5.
2. Gabriellsson BG. Olofsson LE. Sjogren A. et al. Obes Res. 2005, Apr, 13(4):649-52.
3. Shah S. Yu G. Mol Interv. 2006, Apr, 6(2):74-6, 58. Review.

Call 1-510-860-4615

+86-19375157864

Email Info@ProMab.com

Web www.ProMab.com

www.ProMab.cn

Protocol

WB - www.promab.com/protocol/wb.html






IHC - www.promab.com/protocol/ihc.html

ICC - www.promab.com/protocol/icc.html

HCM - www.promab.com/protocol/hcm.html

Antigen Sequence is available upon request.

Products and Services

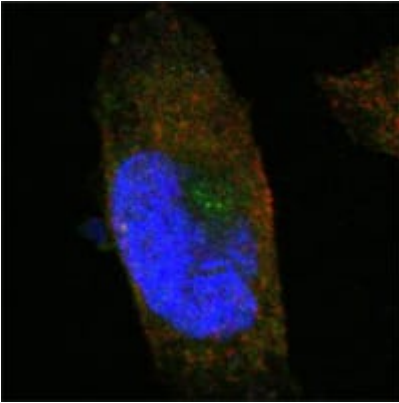
-  Mouse Monoclonal Antibody
-  Rat Monoclonal Antibody
-  Human Antibody
-  Hybridoma Sequencing
-  Polyclonal Antibody

For Research Only

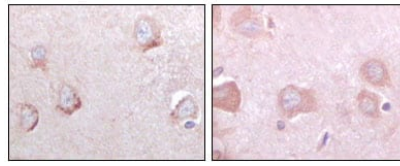
Application Key:WB - Western Blot | IHC - Immunohistochemistry | ICC - Immunocytochemistry | FCM - Flow Cytometry | ELISA - Enzyme-linked Immunosorbent Assay | IP - Immunoprecipitation

#20150

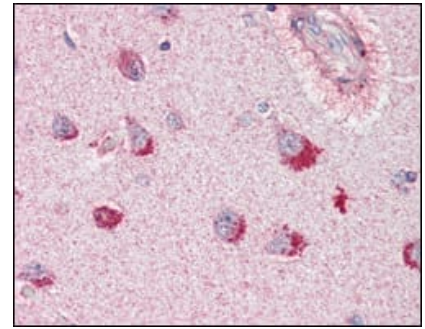
Mouse Monoclonal Antibody to SORL1



Confocal Immunofluorescence analysis of PANC-1 cells using SORL1 mouse mAb (green). Red: Actin filaments have been labeled with Alexa Fluor-555 phalloidin. Blue: DRAQ5 fluorescent DNA dye.



Immunohistochemical analysis of paraffin-embedded human cerebrum tissues using SORL1 mouse mAb with DAB staining.



Immunohistochemical analysis of paraffin-embedded human brain, cortex tissues using SORL1 mouse mAb.

For Research Only

Application Key: WB - Western Blot | IHC - Immunohistochemistry | ICC - Immunocytochemistry | FCM - Flow Cytometry | ELISA - Enzyme-linked Immunosorbent Assay | IP - Immunoprecipitation

#20150