

Mouse Monoclonal Antibody to FER

Order Information

Catalog#	20152	
Size/Concentration	100µl	50µl
Price(¥)	2180	1280

Description

FER (fer tyrosine kinase) is a member of the FPS/FES family of nontransmembrane receptor tyrosine kinases, which shares a functional domain and is involved in signaling pathways through receptor tyrosine kinases (RTK) and cytokine receptors. The Fes /Fps family is distinct from c-Src, c-Abl and related nRTKs and was originally distinguished as a homolog to retroviral oncoproteins. In vivo, Fer kinase assembles into homotrimers via conserved coiled-coil domains. The N-terminal coiled-coil domains of Fer can autophosphorylate in trans, thereby regulating their cellular function through differential phosphorylation states. Growth factor exposure can induce tyrosine phosphorylation of Fer and recruitment of Fer to RTK complexes containing p85. It is expressed predominantly in mature hematopoietic cells of the granulocytic and monocytic lineage, and has been shown to be expressed in vascular endothelial cells. Fer is implicated in insulin signaling, cell-cell signaling, human prostatic proliferative diseases, and is involved in the regulation of G1 progression.

Specification

Aliases : TYK3; FER

Entrez GeneID : 2241

Swissprot : P16591

clone : 5D2C4

WB Predicted band size : 95kDa

Host/Isotype : Mouse IgG1

Storage : Store at 4°C short term. Aliquot and store at -20°C long term. Avoid freeze/thaw cycles.

Species Reactivity : Human, Mouse

Immunogen : Purified recombinant fragment of human FER expressed in E. Coli.

Formulation : Ascitic fluid containing 0.03% sodium azide.

Application

WB	1/500 - 1/2000
IHC	1/200 - 1/1000
ICC	1/200 - 1/1000
ELISA	1/10000

References

- Li L, Cheng X, Ling HQ. Plant Mol Biol. 2004, Jan, 54(1):125-36.
- Girault JA, Greengard P. Arch Neurol. 2004, May, 61(5):641-4.
- Fan L, Di Ciano-Oliveira C, Weed SA, et al. Biochem J. 2004, Jun 1, 380(Pt 2):581-91.

Call 1-510-860-4615

+86-19375157864

Email Info@ProMab.com

Web www.ProMab.com

www.ProMab.cn

Protocol

WB - www.promab.com/protocol/wb.html

IHC - www.promab.com/protocol/ihc.html

ICC - www.promab.com/protocol/icc.html

HCM - www.promab.com/protocol/hcm.html

Antigen Sequence is available upon request.

Products and Services

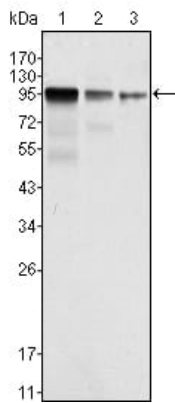
- Mouse Monoclonal Antibody
- Rat Monoclonal Antibody
- Human Antibody
- Hybridoma Sequencing
- Polyclonal Antibody

For Research Only

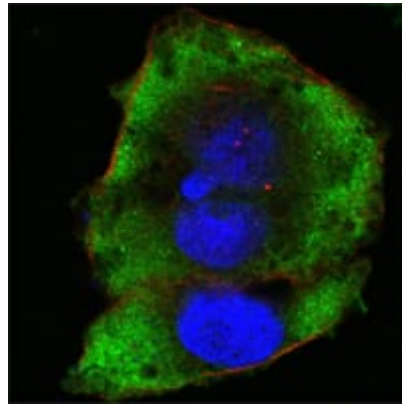
Application Key: WB - Western Blot | IHC - Immunohistochemistry | ICC - Immunocytochemistry | FCM - Flow Cytometry | ELISA - Enzyme-linked Immunosorbent Assay | IP - Immunoprecipitation

#20152

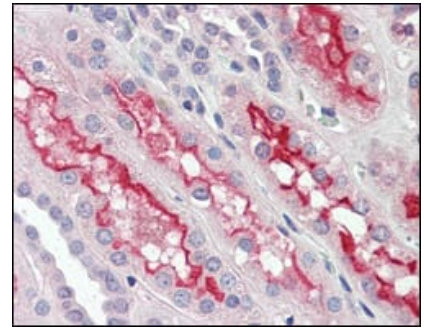
Mouse Monoclonal Antibody to FER



Western blot analysis using FER mouse mAb against NIH/3T3 (1), A549 (2) and SK-MEL-5 (3) cell lysate.



Confocal Immunofluorescence analysis of HeLa cells using FER mouse mAb (green). Red: Actin filaments have been labeled with Alexa Fluor-555 phalloidin. Blue: DRAQ5 fluorescent DNA dye.



Immunohistochemical analysis of paraffin-embedded human kidney tissues using FER mouse mAb.

For Research Only

Application Key: WB - Western Blot | IHC - Immunohistochemistry | ICC - Immunocytochemistry | FCM - Flow Cytometry | ELISA - Enzyme-linked Immunosorbent Assay | IP - Immunoprecipitation

#20152