

Mouse Monoclonal Antibody to beta-Actin

Order Information

Catalog#	20270	
Size/Concentration	100µl	50µl
Price(¥)	1320	780

Description

Beta-actin (PS1TP5-binding protein 1), also known as ACTB, PS1TP5BP1. Entrez Protein NP_001092. It is one of six different actin proteins. Actin, a ubiquitous eukaryotic protein, is the major component of the cytoskeleton. Actins are highly conserved proteins that are involved in various types of cell motility, structure, and integrity. Actin is ubiquitously expressed in all eukaryotic cells. This actin is a major constituent of the contractile apparatus and one of the two nonmuscle cytoskeletal actins.

Specification

Aliases : PS1TP5BP1; ACTB

Entrez GeneID : 60

Swissprot : P60709

clone : 8H10D10

WB Predicted band size : 42kDa

Host/Isotype : Mouse IgG2b

Antibody Type : Loading Control Antibody

Storage : Store at 4°C short term. Aliquot and store at -20°C long term. Avoid freeze/thaw cycles.

Species Reactivity : Human, Mouse, Hamster, Rat, Monkey, Dog

Immunogen : Synthetic peptide corresponding to amino-terminal residues of human beta-Actin, conjugated to KLH.

Formulation : Ascitic fluid containing 0.03% sodium azide.

Application

WB	1/500 - 1/2000
ICC	1/200 - 1/1000
FCM	1/200 - 1/400
ELISA	1/10000

References

1. Proteomics. 2005 Oct;5(15):3876-84.
2. PLoS Med. 2005 Oct;2(10):e263.
3. Mol Biol Cell. 2005 Nov;16(11):5055-60
4. Nature. 2005 Oct 20;437(7062):1173-8.

Call 1-510-860-4615

+86-19375157864

Email Info@ProMab.com

Web www.ProMab.com

www.ProMab.cn

Protocol

WB - www.promab.com/protocol/wb.html

IHC - www.promab.com/protocol/ihc.html

ICC - www.promab.com/protocol/icc.html

HCM - www.promab.com/protocol/hcm.html

Antigen Sequence is available upon request.

Products and Services

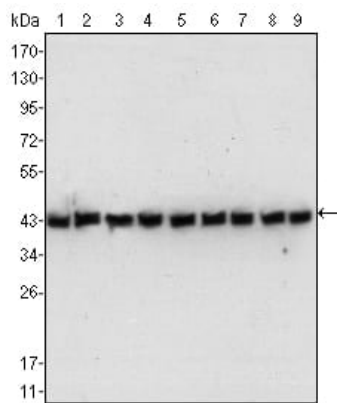
- Mouse Monoclonal Antibody
- Rat Monoclonal Antibody
- Human Antibody
- Hybridoma Sequencing
- Polyclonal Antibody

For Research Only

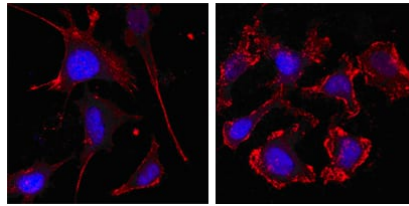
Application Key: WB - Western Blot | IHC - Immunohistochemistry | ICC - Immunocytochemistry | FCM - Flow Cytometry | ELISA - Enzyme-linked Immunosorbent Assay | IP - Immunoprecipitation

#20270

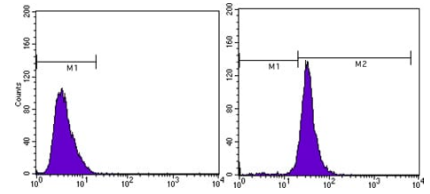
Mouse Monoclonal Antibody to beta-Actin



Western blot analysis using beta-Actin mouse mAb against NIH/3T3 (1), Jurkat (2), HeLa (3), CHO (4), PC12 (5), HEK293 (6), COS (7), A549 (8) and MCF-7 (9) cell lysate.



Confocal Immunofluorescence analysis of SKBR-3 (left) and A549 (right) cells using beta Actin mouse mAb (red, the secondary Ab is Cy3-Goat anti mouse IgG). Blue: DRAQ5 fluorescent DNA dye.



Flow cytometric analysis of MCF-7 cells using beta Actin mouse mAb (right) and negative control (left).

For Research Only

Application Key: WB - Western Blot | IHC - Immunohistochemistry | ICC - Immunocytochemistry | FCM - Flow Cytometry | ELISA - Enzyme-linked Immunosorbent Assay | IP - Immunoprecipitation

#20270