

# Mouse Monoclonal Antibody to LIN28

## Order Information

Catalog#	20271	
Size/Concentration	100µl	50µl
Price(¥)	2180	1280

## Description

LIN28: lin-28 homolog (*C. elegans*), also known as CSDD1, ZCCHC1. Entrez Protein NP\_078950. LIN28 was first discovered in the nematode *C. elegans*. It is a heterochronic protein in *C. elegans* involved in the timing of developmental events and choice of stage specific cell fates. LIN28 expression has been found to be regulated post-transcriptionally by miRNAs in both nematodes and mammals. In humans it is expressed in embryonic stem cells and its expression decreases during differentiation. It is negatively regulated by retinoic acid in neuronal differentiation.

## Specification

Aliases : CSDD1; LIN-28; LIN28A; ZCCHC1

Entrez GeneID : 79727

Swissprot : Q9H9Z2

clone : 6D1F9

WB Predicted band size : 23kDa

Host/Isotype : Mouse IgG1

Storage : Store at 4°C short term. Aliquot and store at -20°C long term. Avoid freeze/thaw cycles.

Species Reactivity : Human

Immunogen : Purified recombinant fragment of LIN28 (aa93-209) expressed in *E. Coli*.

Formulation : Ascitic fluid containing 0.03% sodium azide.

## Application

ICC	1/200 - 1/1000
ELISA	1/10000

## References

1. Dev Dyn. 2005 Feb;232(2):487-97.
2. Mol Cell Biol. 2005 Nov;25(21):9198-208.

Call 1-510-860-4615  
+86-19375157864  
Email [Info@ProMab.com](mailto:Info@ProMab.com)  
Web [www.ProMab.com](http://www.ProMab.com)  
[www.ProMab.cn](http://www.ProMab.cn)

## Protocol

WB - [www.promab.com/protocol/wb.html](http://www.promab.com/protocol/wb.html)  
IHC - [www.promab.com/protocol/ihc.html](http://www.promab.com/protocol/ihc.html)  
ICC - [www.promab.com/protocol/icc.html](http://www.promab.com/protocol/icc.html)  
HCM - [www.promab.com/protocol/hcm.html](http://www.promab.com/protocol/hcm.html)

**Antigen Sequence** is available upon request.

## Products and Services

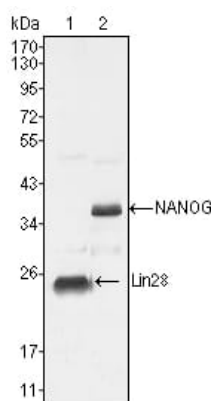
- Mouse Monoclonal Antibody
- Rat Monoclonal Antibody
- Human Antibody
- Hybridoma Sequencing
- Polyclonal Antibody

**For Research Only**

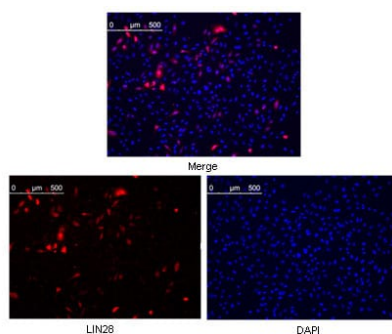
**Application Key:** WB - Western Blot | IHC - Immunohistochemistry | ICC - Immunocytochemistry | FCM - Flow Cytometry | ELISA - Enzyme-linked Immunosorbent Assay | IP - Immunoprecipitation

# #20271

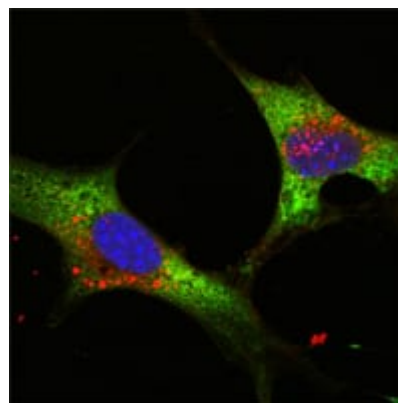
# Mouse Monoclonal Antibody to LIN28



Western blot analysis using LIN28 mouse mAb against NTERA-2 cell lysate (1).



Confocal Immunofluorescence analysis of methanol fixed HeLa cells were transfected with pMX construct of human LIN28, cells were analyzed ~62 hours after transfection.



Confocal Immunofluorescence analysis of NTERA-2 cells using LIN28 mouse mAb (green). Blue: DRAQ5 fluorescent DNA dye.

**For Research Only**

**Application Key:** WB - Western Blot | IHC - Immunohistochemistry | ICC - Immunocytochemistry | FCM - Flow Cytometry | ELISA - Enzyme-linked Immunosorbent Assay | IP - Immunoprecipitation

#20271