

Mouse Monoclonal Antibody to EphA7

Order Information

Catalog#	20275	
Size/Concentration	100µl	50µl
Price(¥)	2180	1280

Description

EphA7: EPH receptor A7. This gene belongs to the ephrin receptor subfamily of the protein-tyrosine kinase family. EPH and EPH-related receptors have been implicated in mediating developmental events, particularly in the nervous system. Receptors in the EPH subfamily typically have a single kinase domain and an extracellular region containing a Cys-rich domain and 2 fibronectin type III repeats. The ephrin receptors are divided into 2 groups based on the similarity of their extracellular domain sequences and their affinities for binding ephrin-A and ephrin-B ligands.

Specification

Aliases : EHK3; HEK11

Entrez GeneID : 2045

Swissprot : Q15375

clone : 6C8G7

Host/Isotype : Mouse IgG2b

Storage : Store at 4°C short term. Aliquot and store at -20°C long term. Avoid freeze/thaw cycles.

Species Reactivity : Human

Immunogen : Purified recombinant fragment of EphA7 (aa27-210) expressed in E. Coli.

Formulation : Ascitic fluid containing 0.03% sodium azide.

Application

IHC	1/200 - 1/1000
ELISA	1/10000

References

1. Genome Res. 2004 Oct;14(10B):2121-7.
2. Nature. 2005 Oct 20;437(7062):1173-8.

Call 1-510-860-4615
+86-19375157864
Email Info@ProMab.com
Web www.ProMab.com
www.ProMab.cn

Protocol

WB - www.promab.com/protocol/wb.html
IHC - www.promab.com/protocol/ihc.html
ICC - www.promab.com/protocol/icc.html
HCM - www.promab.com/protocol/hcm.html

Antigen Sequence is available upon request.

Products and Services

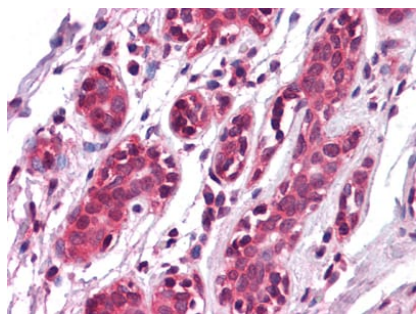
- Mouse Monoclonal Antibody
- Rat Monoclonal Antibody
- Human Antibody
- Hybridoma Sequencing
- Polyclonal Antibody

For Research Only

Application Key: WB - Western Blot | IHC - Immunohistochemistry | ICC - Immunocytochemistry | FCM - Flow Cytometry | ELISA - Enzyme-linked Immunosorbent Assay | IP - Immunoprecipitation

#20275

Mouse Monoclonal Antibody to EphA7



Immunohistochemical analysis of paraffin-embedded human Breast tissues using EPHA7 mouse mAb

For Research Only

Application Key: WB - Western Blot | IHC - Immunohistochemistry | ICC - Immunocytochemistry | FCM - Flow Cytometry | ELISA - Enzyme-linked Immunosorbent Assay | IP - Immunoprecipitation

#20275