

# Mouse Monoclonal Antibody to Cytokeratin 8

## Order Information

Catalog#	20280	
Size/Concentration	100µl	50µl
Price(¥)	2180	1280

## Description

Cytokeratin 8, also known as CK8, KRT8, K8. Entrez Protein NP\_002264. It is a member of the type II keratin family. Type I and type II keratins heteropolymerize to form intermediate-sized filaments in the cytoplasm of epithelial cells. It typically dimerizes with keratin 18 to form an intermediate filament in simple single-layered epithelial cells. This protein plays a role in maintaining cellular structural integrity and also functions in signal transduction and cellular differentiation. Mutations in this gene cause cryptogenic cirrhosis.

## Specification

Aliases : CK8; CYK8; K2C8; KRT8

Entrez GeneID : 3856

Swissprot : P05787

clone : 8A5D12

WB Predicted band size : 54kDa

Host/Isotype : Mouse IgG1

Storage : Store at 4°C short term. Aliquot and store at -20°C long term. Avoid freeze/thaw cycles.

Species Reactivity : Human

Immunogen : Purified recombinant fragment of human Cytokeratin (aa391-483) expressed in E. Coli.

Formulation : Ascitic fluid containing 0.03% sodium azide.

## Application

WB	1/500 - 1/2000
IHC	1/200 - 1/1000
ICC	1/200 - 1/1000
ELISA	1/10000

## References

1. Cancer Genet Cytogenet. 2007 Oct 15;178(2):94-103.
2. Cancer Lett. 2008 Jul 8;265(2):188-96.

Call 1-510-860-4615  
+86-19375157864  
Email Info@ProMab.com  
Web www.ProMab.com  
www.ProMab.cn

## Protocol

WB - [www.promab.com/protocol/wb.html](http://www.promab.com/protocol/wb.html)  
IHC - [www.promab.com/protocol/ihc.html](http://www.promab.com/protocol/ihc.html)  
ICC - [www.promab.com/protocol/icc.html](http://www.promab.com/protocol/icc.html)  
HCM - [www.promab.com/protocol/hcm.html](http://www.promab.com/protocol/hcm.html)

**Antigen Sequence** is available upon request.

## Products and Services

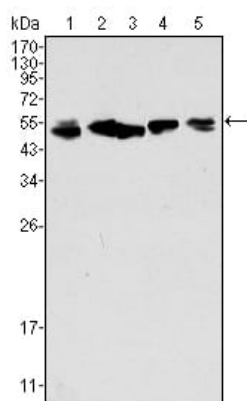
- Mouse Monoclonal Antibody
- Rat Monoclonal Antibody
- Human Antibody
- Hybridoma Sequencing
- Polyclonal Antibody

**For Research Only**

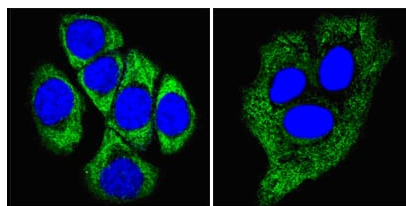
**Application Key:** WB - Western Blot | IHC - Immunohistochemistry | ICC - Immunocytochemistry | FCM - Flow Cytometry | ELISA - Enzyme-linked Immunosorbent Assay | IP - Immunoprecipitation

# #20280

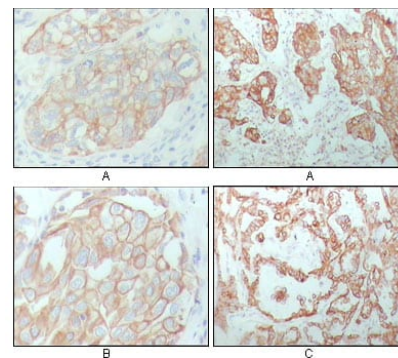
# Mouse Monoclonal Antibody to Cytokeratin 8



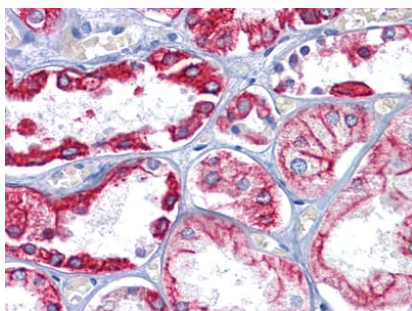
Western blot analysis using CK8 mouse mAb against A549 (1), HeLa (2), MCF-7 (3), A431 (4) and HepG2 (5) cell lysate.



Confocal Immunofluorescence analysis of methanol-fixed ECA109 cells (left) and HepG2 cells (right) using CK8 mouse mAb (green), showing cytoplasmic localization. Blue: DRAQ5 fluorescent DNA dye.



Immunohistochemical analysis of paraffin-embedded human breast carcinoma (A), lung cancer (B) and ovarian cancer tissue (C), showing membrane and cytoplasmic localization with DAB staining using CK8 mouse mAb.



Immunohistochemical analysis of paraffin-embedded human kidney tissues using CK8 mouse mAb

**For Research Only**

**Application Key:** WB - Western Blot | IHC - Immunohistochemistry | ICC - Immunocytochemistry | FCM - Flow Cytometry | ELISA - Enzyme-linked Immunosorbent Assay | IP - Immunoprecipitation

#20280