

# Mouse Monoclonal Antibody to CD44

## Order Information

Catalog#	20282	
Size/Concentration	100µl	50µl
Price(¥)	2180	1280

## Description

CD44, also known as IN, LHRMIC4, CDW44, HCELL. It is a cell-surface glycoprotein involved in cell-cell interactions, cell adhesion and migration. It is a receptor for hyaluronic acid (HA) and can also interact with other ligands, such as osteopontin, collagens, and matrix metalloproteinases (MMPs). This protein participates in a wide variety of cellular functions including lymphocyte activation, recirculation and homing, hematopoiesis, and tumor metastasis. Transcripts for this gene undergo complex alternative splicing that results in many functionally distinct isoforms, however, the full length nature of some of these variants has not been determined. Alternative splicing is the basis for the structural and functional diversity of this protein, and may be related to tumor metastasis.

## Specification

Aliases : IN; LHR; MC56; MDU2; MDU3; MIC4; Pgp1; CDW44; CSPG8; HCELL

Entrez GeneID : 960

Swissprot : P16070

clone : 8E2F3

WB Predicted band size : 82kDa

Host/Isotype : Mouse IgG1

Storage : Store at 4°C short term. Aliquot and store at -20°C long term. Avoid freeze/thaw cycles.

Species Reactivity : Human, Mouse

Immunogen : Purified recombinant fragment of human CD44 (628-699) expressed in E. Coli.

Formulation : Ascitic fluid containing 0.03% sodium azide.

## Application

IHC	1/200 - 1/1000
ICC	1/200 - 1/1000
FCM	1/200 - 1/400
ELISA	1/10000

## References

1. Exp Mol Pathol. 2007 Dec;83(3):341-6.
2. Mol Cell Proteomics. 2008 Mar;7(3):499-508.

Call 1-510-860-4615

+86-19375157864

Email [Info@ProMab.com](mailto:Info@ProMab.com)

Web [www.ProMab.com](http://www.ProMab.com)

[www.ProMab.cn](http://www.ProMab.cn)

## Protocol

WB - [www.promab.com/protocol/wb.html](http://www.promab.com/protocol/wb.html)

IHC - [www.promab.com/protocol/ihc.html](http://www.promab.com/protocol/ihc.html)

ICC - [www.promab.com/protocol/icc.html](http://www.promab.com/protocol/icc.html)

HCM - [www.promab.com/protocol/hcm.html](http://www.promab.com/protocol/hcm.html)

**Antigen Sequence** is available upon request.

## Products and Services

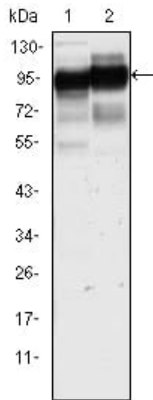
- Mouse Monoclonal Antibody
- Rat Monoclonal Antibody
- Human Antibody
- Hybridoma Sequencing
- Polyclonal Antibody

**For Research Only**

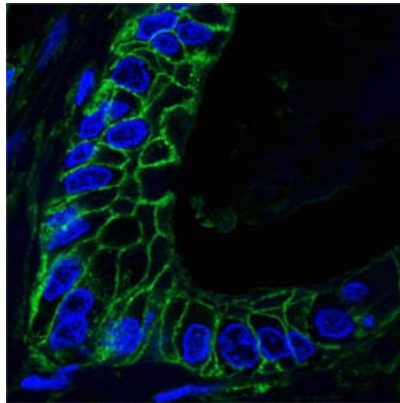
**Application Key:** WB - Western Blot | IHC - Immunohistochemistry | ICC - Immunocytochemistry | FCM - Flow Cytometry | ELISA - Enzyme-linked Immunosorbent Assay | IP - Immunoprecipitation

# #20282

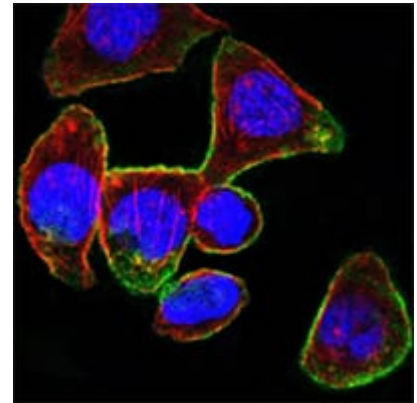
# Mouse Monoclonal Antibody to CD44



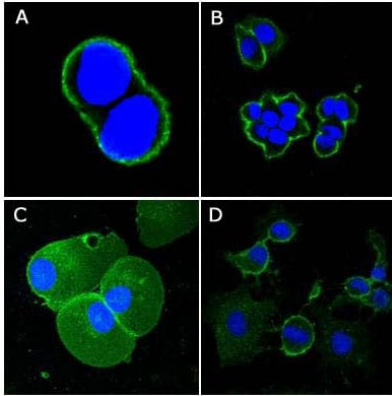
Western blot analysis using CD44 mouse mAb against HeLa (1) and HUVE-12(2) cell lysate.



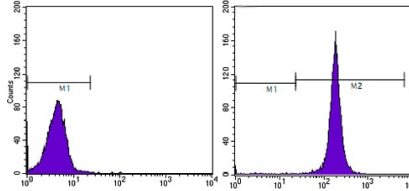
Confocal analysis of paraffin-embedded human lung cancer tissues using CD44 mouse mAb (green), showing membrane localization. Blue: DRAQ5 fluorescent DNA dye.



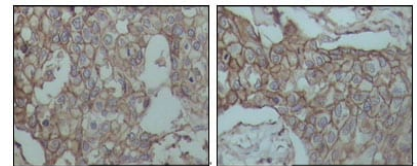
Confocal Immunofluorescence analysis of PANC-1 cells using CD44 mouse mAb (green). Red: Actin filaments have been labeled with DY-554 phalloidin. Blue: DRAQ5 fluorescent DNA dye.



Confocal Immunofluorescence analysis of methanol-fixed A431 (A), HeLa (B), PANC-1 (C) and EC (D) cells using CD44 mouse mAb (green), showing membrane localization. Blue: DRAQ5 fluorescent DNA dye.



Flow cytometric analysis of HeLa cells using CD44 mouse mAb (right) and negative control (left).



Immunohistochemical analysis of paraffin-embedded human breast carcinoma tissues, showing membrane localization with DAB staining using CD44 mouse mAb.

**For Research Only**

**Application Key:** WB - Western Blot | IHC - Immunohistochemistry | ICC - Immunocytochemistry | FCM - Flow Cytometry | ELISA - Enzyme-linked Immunosorbent Assay | IP - Immunoprecipitation

#20282