

Mouse Monoclonal Antibody to FGFR1

Order Information

Catalog#	20359	
Size/Concentration	100µl	50µl
Price(¥)	2180	1280

Description

Fibroblast growth factor receptor 1 (FGFR1), also known as basic fibroblast growth factor receptor 1, fms-related tyrosine kinase-2 / Pfeiffer syndrome, and CD331, is a receptor tyrosine kinase whose ligands are specific members of the fibroblast growth factor family. FGFR1 has been shown to be associated with Pfeiffer syndrome. It is a member of the fibroblast growth factor receptor (FGFR) family, where amino acid sequence is highly conserved between members and throughout evolution. FGFR family members differ from one another in their ligand affinities and tissue distribution. A full-length representative protein consists of an extracellular region, composed of three immunoglobulin-like domains, a single hydrophobic membrane-spanning segment and a cytoplasmic tyrosine kinase domain. The extracellular portion of the protein interacts with fibroblast growth factors, setting in motion a cascade of downstream signals, ultimately influencing mitogenesis and differentiation. This particular family member binds both acidic and basic fibroblast growth factors and is involved in limb induction.

Specification

Aliases : CEK; FLG; OGD; FLT2; KAL2; BFGFR; CD331; FGFBR; HBGFR

Entrez GeneID : 2260

Swissprot : P11362

clone : 3D4F7

WB Predicted band size : 92kDa

Host/Isotype : Mouse IgG2b

Storage : Store at 4°C short term. Aliquot and store at -20°C long term. Avoid freeze/thaw cycles.

Species Reactivity : Human

Immunogen : Purified recombinant extracellular fragment of human FGFR1 (aa22-376) fused with hlgGfc tag expressed in HEK293 cells.

Formulation : Ascitic fluid containing 0.03% sodium azide.

Application

ELISA	1/10000
-------	---------

References

1. J Biol Chem. 2004 Jul 9;279(28):29325-35.
2. Arterioscler Thromb Vasc Biol. 2005 May;25(5):944-9.
3. Breast Cancer Res. 2007;9(2):R23.

Call 1-510-860-4615

+86-19375157864

Email Info@ProMab.com

Web www.ProMab.com

www.ProMab.cn

Protocol

WB - www.promab.com/protocol/wb.html

IHC - www.promab.com/protocol/ihc.html

ICC - www.promab.com/protocol/icc.html

HCM - www.promab.com/protocol/hcm.html

Antigen Sequence is available upon request.

Products and Services

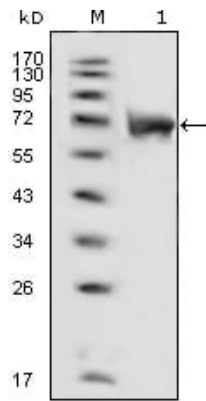
- Mouse Monoclonal Antibody
- Rat Monoclonal Antibody
- Human Antibody
- Hybridoma Sequencing
- Polyclonal Antibody

For Research Only

Application Key:WB - Western Blot | IHC - Immunohistochemistry | ICC - Immunocytochemistry | FCM - Flow Cytometry | ELISA - Enzyme-linked Immunosorbent Assay | IP - Immunoprecipitation

#20359

Mouse Monoclonal Antibody to FGFR1



Western blot analysis using FGFR1 mouse mAb against extracellular domain of human FGFR1 (aa22-376).

For Research Only

Application Key: WB - Western Blot | IHC - Immunohistochemistry | ICC - Immunocytochemistry | FCM - Flow Cytometry | ELISA - Enzyme-linked Immunosorbent Assay | IP - Immunoprecipitation

#20359