

Mouse Monoclonal Antibody to CK17

Order Information

Catalog#	20363	
Size/Concentration	100µl	50µl
Price(¥)	2180	1280

Description

CK17, also known as KRT17, it is the type I intermediate filament chain keratin 17. It is found in nail beds, hair follicles, sebaceous glands, and other epidermal appendages. Mutations in this gene lead to Jackson-Lawler type pachyonychia congenita and steatocystoma multiplex. May play a role in the formation and maintenance of various skin appendages, specifically in determining shape and orientation of hair. May be a marker of basal cell differentiation in complex epithelia and therefore indicative of a certain type of epithelial "stem cells". May act as an autoantigen in the immunopathogenesis of psoriasis, with certain peptide regions being a major target for autoreactive T-cells and hence causing their proliferation. Required for the correct growth of hair follicles, in particular for the persistence of the anagen (growth) state. Modulates the function of TNF-alpha in the specific context of hair cycling. Regulates protein synthesis and epithelial cell growth through binding to the adapter protein SFN and by stimulating Akt/mTOR pathway. Involved in tissue repair.

Specification

Aliases : PC; K17; PC2; PCHC1; KRT17

Entrez GeneID : 3872

Swissprot : Q04695

clone : 3B12

WB Predicted band size : 49kDa

Host/Isotype : Mouse IgG2b

Storage : Store at 4°C short term. Aliquot and store at -20°C long term. Avoid freeze/thaw cycles.

Species Reactivity : Human

Immunogen : Purified recombinant fragment of CK17 expressed in E. Coli.

Formulation : Ascitic fluid containing 0.03% sodium azide.

Application

WB	1/500 - 1/2000
IHC	1/200 - 1/1000
ELISA	1/10000

References

1. Am J Pathol. 2002 Dec;161(6):1991-6.
2. Br J Dermatol. 1995 Oct;133(4):501-11.

Call 1-510-860-4615

+86-19375157864

Email Info@ProMab.com

Web www.ProMab.com

www.ProMab.cn

Protocol

WB - www.promab.com/protocol/wb.html

IHC - www.promab.com/protocol/ihc.html

ICC - www.promab.com/protocol/icc.html

HCM - www.promab.com/protocol/hcm.html

Antigen Sequence is available upon request.

Products and Services

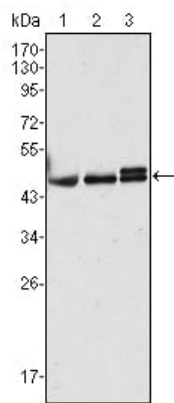
- Mouse Monoclonal Antibody
- Rat Monoclonal Antibody
- Human Antibody
- Hybridoma Sequencing
- Polyclonal Antibody

For Research Only

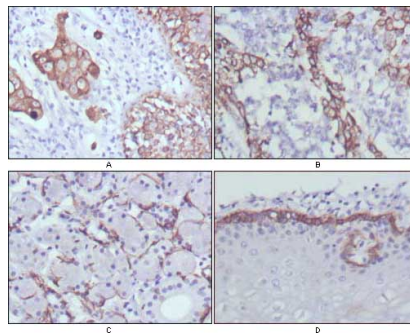
Application Key:WB - Western Blot | IHC - Immunohistochemistry | ICC - Immunocytochemistry | FCM - Flow Cytometry | ELISA - Enzyme-linked Immunosorbent Assay | IP - Immunoprecipitation

#20363

Mouse Monoclonal Antibody to CK17



Western blot analysis using CK17 mouse mAb against HeLa (1), MCF-7 (2) and A431 (3) cell lysate.



Immunohistochemical analysis of paraffin-embedded human lung cancer (A), endometrial carcinoma (B), sublingual gland (C) and esophagus (D) tissues using CK17 mouse mAb with DAB staining.

For Research Only

Application Key: WB - Western Blot | IHC - Immunohistochemistry | ICC - Immunocytochemistry | FCM - Flow Cytometry | ELISA - Enzyme-linked Immunosorbent Assay | IP - Immunoprecipitation

#20363