

Mouse Monoclonal Antibody to ERBB3

Order Information

Catalog#	20367	
Size/Concentration	100µl	50µl
Price(¥)	2180	1280

Description

ERBB3, v-erb-b2 erythroblastic leukemia viral oncogene homolog 3 (avian). It is a member of the epidermal growth factor receptor (EGFR) family of receptor tyrosine kinases. This membrane-bound protein has a neuregulin binding domain but not an active kinase domain. It therefore can bind this ligand but not convey the signal into the cell through protein phosphorylation. However, it does form heterodimers with other EGF receptor family members which do have kinase activity.

Heterodimerization leads to the activation of pathways which lead to cell proliferation or differentiation. Amplification of this gene and/or overexpression of its protein have been reported in numerous cancers, including prostate, bladder, and breast tumors. Alternate transcriptional splice variants encoding different isoforms have been characterized. One isoform lacks the intermembrane region and is secreted outside the cell. This form acts to modulate the activity of the membrane-bound form. Additional splice variants have also been reported, but they have not been thoroughly characterized.

Specification

Aliases : HER3; c-erbB3

Entrez GeneID : 2065

Swissprot : P21860

clone : 2F9

WB Predicted band size : 148kDa

Host/Isotype : Mouse IgG1

Storage : Store at 4°C short term. Aliquot and store at -20°C long term. Avoid freeze/thaw cycles.

Species Reactivity : Human

Immunogen : Purified recombinant extracellular fragment of human ERBB3 (aa22-369) fused with hlgGfc tag expressed in HEK293 cells.

Formulation : Ascitic fluid containing 0.03% sodium azide.

Application

ICC	1/200 - 1/1000
ELISA	1/10000

References

1. Cancer Sci. 2007 Sep;98(9):1498-503.
2. Breast Cancer Res. 2008;10(1):R2.

Call 1-510-860-4615

+86-19375157864

Email Info@ProMab.com

Web www.ProMab.com

www.ProMab.cn

Protocol

WB - www.promab.com/protocol/wb.html






IHC - www.promab.com/protocol/ihc.html

ICC - www.promab.com/protocol/icc.html

HCM - www.promab.com/protocol/hcm.html

Antigen Sequence is available upon request.

Products and Services

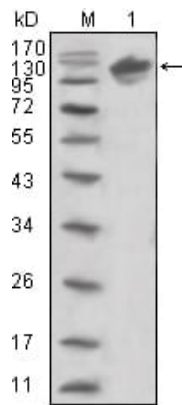
-  Mouse Monoclonal Antibody
-  Rat Monoclonal Antibody
-  Human Antibody
-  Hybridoma Sequencing
-  Polyclonal Antibody

For Research Only

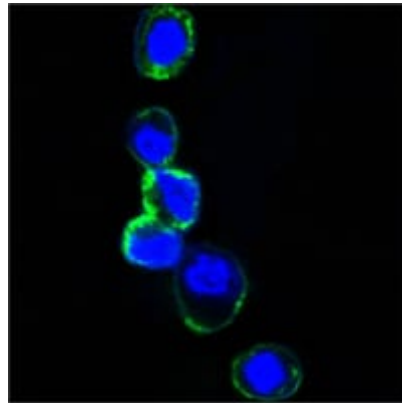
Application Key: WB - Western Blot | IHC - Immunohistochemistry | ICC - Immunocytochemistry | FCM - Flow Cytometry | ELISA - Enzyme-linked Immunosorbent Assay | IP - Immunoprecipitation

#20367

Mouse Monoclonal Antibody to ERBB3



Western blot analysis using ERBB3 mouse mAb against human ERBB3 (aa22-369)-hIgGFc trasfected HEK293 cell lysate (1).



Confocal Immunofluorescence analysis of HEK293 cells trasfected with extracellular ERBB3 (aa22-369)-hIgGFc using ERBB3 mouse mAb (green). Blue: DRAQ5 fluorescent DNA dye.

For Research Only

Application Key: WB - Western Blot | IHC - Immunohistochemistry | ICC - Immunocytochemistry | FCM - Flow Cytometry | ELISA - Enzyme-linked Immunosorbent Assay | IP - Immunoprecipitation

#20367