

Mouse Monoclonal Antibody to ROR1

Order Information

Catalog#	20372	
Size/Concentration	100µl	50µl
Price(¥)	2180	1280

Description

ROR1, a type I membrane protein, is a receptor protein tyrosine kinase that modulates neurite growth in the central nervous system. The ROR-family receptor tyrosine kinases consist of two structurally related proteins, ROR1 and ROR2. These proteins are characterized by having intracellular tyrosine kinase domains, which are highly related to Trk-family kinases, extracellular Frizzled-like cysteine-rich domains (CRDs) and Kringle domains. The ROR family members are highly conserved among species, such as *C. elegans*, *Drosophila*, *Xenopus* and mammals. ROR1 and ROR2 are both involved in organogenesis with particular emphasis in neuronal differentiation. Increased expression of ROR1 in acute lymphoblastic leukemias (ALLs) as well as chronic lymphocytic leukemias (CLLs) implicate this protein as a potential tool for targeted immunotherapy in these diseases.

Specification

Aliases : ROR1

Entrez GeneID : 4919

Swissprot : Q01973

clone : 2H6

WB Predicted band size : 101kDa

Host/Isotype : Mouse IgG1

Storage : Store at 4°C short term. Aliquot and store at -20°C long term. Avoid freeze/thaw cycles.

Species Reactivity : Human

Immunogen : Recombinant extracellular fragment of human ROR1 (aa30-406) fused with hlgGfc tag, expressed in HEK293 cells

Formulation : Ascitic fluid containing 0.03% sodium azide.

Application

ICC	1/200 - 1/1000
ELISA	1/10000

References

1. J Cell Sci. 2005 Jan 15;118(Pt 2):433-46.
2. Oncogene. 1996 Oct 3;13(7):1555-9.






Call 1-510-860-4615
+86-19375157864
Email Info@ProMab.com
Web www.ProMab.com
www.ProMab.cn

Protocol

WB - www.promab.com/protocol/wb.html
IHC - www.promab.com/protocol/ihc.html
ICC - www.promab.com/protocol/icc.html
HCM - www.promab.com/protocol/hcm.html

Antigen Sequence is available upon request.

Products and Services

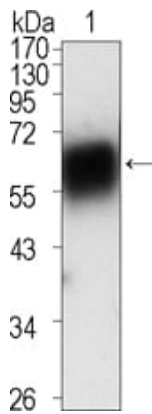
-  Mouse Monoclonal Antibody
-  Rat Monoclonal Antibody
-  Human Antibody
-  Hybridoma Sequencing
-  Polyclonal Antibody

For Research Only

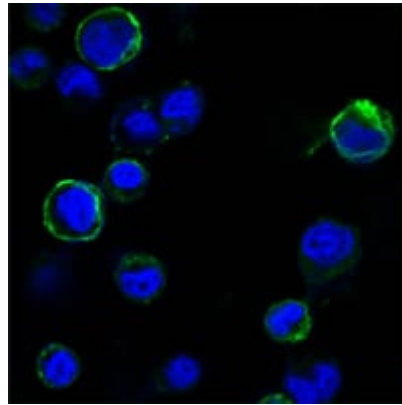
Application Key:WB - Western Blot | IHC - Immunohistochemistry | ICC - Immunocytochemistry | FCM - Flow Cytometry | ELISA - Enzyme-linked Immunosorbent Assay | IP - Immunoprecipitation

#20372

Mouse Monoclonal Antibody to ROR1



Western blot analysis using ROR1 mouse mAb against extracellular domain of human ROR1 (aa30-423).



Confocal Immunofluorescence analysis of HEK293 cells trasfected with extracellular ROR1 (aa30-406)-hIgGFc using ROR1 mouse mAb (green). Blue: DRAQ5 fluorescent DNA dye.

For Research Only

Application Key: WB - Western Blot | IHC - Immunohistochemistry | ICC - Immunocytochemistry | FCM - Flow Cytometry | ELISA - Enzyme-linked Immunosorbent Assay | IP - Immunoprecipitation

#20372