

# Mouse Monoclonal Antibody to TUBB3

## Order Information

Catalog#	20374	
Size/Concentration	100µl	50µl
Price(¥)	1320	780

## Description

Tubulin, beta 3, also known as TUBB3. Tubulin is the major constituent of microtubules. It binds two moles of GTP, one at an exchangeable site on the beta chain and one at a non exchangeable site on the alpha-chain. Tubulin is a highly conserved protein with a molecular weight of ~50 kD. Microtubules play key roles in chromosome segregation in mitosis, intracellular transport, ciliary and flagellar bending, and structural support of the cytoskeleton. The two main tubulin isoforms,  $\alpha$ - and

## Specification

Aliases : tubulin, beta 3; MC1R; TUBB4  
 Entrez GeneID : 10381  
 Swissprot : Q13509  
 clone : 2E9  
 WB Predicted band size : 50~55kDa  
 Host/Isotype : Mouse IgG1  
 Antibody Type : Loading Control Antibody  
 Storage : Store at 4°C short term. Aliquot and store at -20°C long term. Avoid freeze/thaw cycles.  
 Species Reactivity : Human, Mouse, Rat  
 Immunogen : Purified recombinant fragment of human TUBB3 expressed in E. Coli.  
 Formulation : Ascitic fluid containing 0.03% sodium azide.

## Application

ICC	1/200 - 1/1000
FCM	1/200 - 1/400
ELISA	1/10000

## References

1. Histopathology. 2007 Jun;50(7):949-52.
2. Neurochem Res. 2007 Aug;32(8):1387-98.
3. Exp Eye Res. 1995 Apr;60(4):385-400.

Call 1-510-860-4615  
 +86-19375157864  
 Email Info@ProMab.com  
 Web www.ProMab.com  
 www.ProMab.cn

## Protocol

WB - [www.promab.com/protocol/wb.html](http://www.promab.com/protocol/wb.html)  
 IHC - [www.promab.com/protocol/ihc.html](http://www.promab.com/protocol/ihc.html)  
 ICC - [www.promab.com/protocol/icc.html](http://www.promab.com/protocol/icc.html)  
 HCM - [www.promab.com/protocol/hcm.html](http://www.promab.com/protocol/hcm.html)  
**Antigen Sequence** is available upon request.

## Products and Services

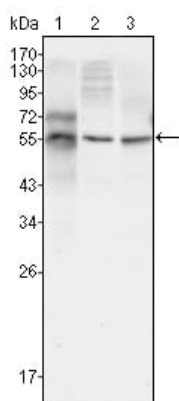
- Mouse Monoclonal Antibody
- Rat Monoclonal Antibody
- Human Antibody
- Hybridoma Sequencing
- Polyclonal Antibody

**For Research Only**

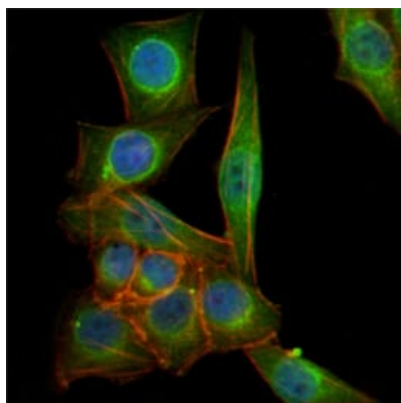
**Application Key:** WB - Western Blot | IHC - Immunohistochemistry | ICC - Immunocytochemistry | FCM - Flow Cytometry | ELISA - Enzyme-linked Immunosorbent Assay | IP - Immunoprecipitation

# #20374

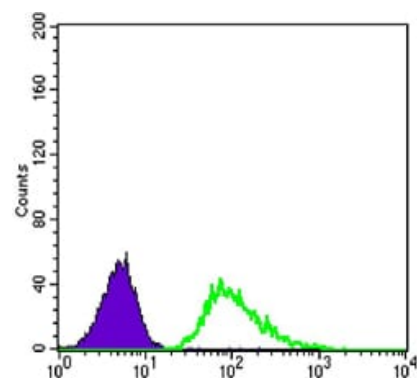
# Mouse Monoclonal Antibody to TUBB3



Western blot analysis using TUBB3 mouse mAb against HepG2 (1), A549 (2) and HeLa (3) cell lysate.



Immunofluorescence analysis of PANC-1 cells using TUBB3 mouse mAb (green). Blue: DRAQ5 fluorescent DNA dye. Red: Actin filaments have been labeled with Alexa Fluor-555 phalloidin.



Flow cytometric analysis of A549 cells using TUBB3 mouse mAb (green) and negative control (purple).

**For Research Only**

**Application Key:** WB - Western Blot | IHC - Immunohistochemistry | ICC - Immunocytochemistry | FCM - Flow Cytometry | ELISA - Enzyme-linked Immunosorbent Assay | IP - Immunoprecipitation

#20374