

Mouse Monoclonal Antibody to FRK

Order Information

Catalog#	20382	
Size/Concentration	100µl	50µl
Price(¥)	2180	1280

Description

FRK (Fyn-related kinase), also known as Rak. It is an epithelial tissue-specific kinase. The human FRK gene maps to chromosome 6q21-q22.3 and encodes a 505 amino acid protein. The protein belongs to the TYR family of protein kinases. This tyrosine kinase is a nuclear protein and may function during G1 and S phase of the cell cycle and suppress growth.

Specification

Aliases : GTK; RAK; PTK5

Entrez GeneID : 2444

Swissprot : P42685

clone : 4E1

WB Predicted band size : 58kDa

Host/Isotype : Mouse IgG1

Storage : Store at 4°C short term. Aliquot and store at -20°C long term. Avoid freeze/thaw cycles.

Species Reactivity : Human

Immunogen : Purified recombinant fragment of human FRK expressed in E. Coli.

Formulation : Ascitic fluid containing 0.03% sodium azide.

Application

WB	1/500 - 1/2000
ELISA	1/10000

References






1. Cell Growth Differ. 1994 Dec;5(12):1347-55.
2. Int J Cancer. 2003 Mar 20;104(2):139-46.

Call 1-510-860-4615
+86-19375157864
Email Info@ProMab.com
Web www.ProMab.com
www.ProMab.cn

Protocol

WB - www.promab.com/protocol/wb.html
IHC - www.promab.com/protocol/ihc.html
ICC - www.promab.com/protocol/icc.html
HCM - www.promab.com/protocol/hcm.html
Antigen Sequence is available upon request.

Products and Services

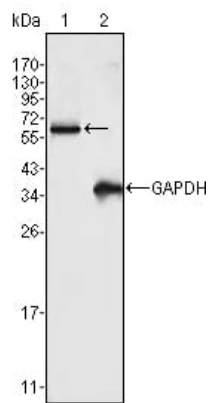
-  Mouse Monoclonal Antibody
-  Rat Monoclonal Antibody
-  Human Antibody
-  Hybridoma Sequencing
-  Polyclonal Antibody

For Research Only

Application Key:WB - Western Blot | IHC - Immunohistochemistry | ICC - Immunocytochemistry | FCM - Flow Cytometry | ELISA - Enzyme-linked Immunosorbent Assay | IP - Immunoprecipitation

#20382

Mouse Monoclonal Antibody to FRK



Western blot analysis using FRK mouse mAb against K562 cell lysate (1).

For Research Only

Application Key: WB - Western Blot | IHC - Immunohistochemistry | ICC - Immunocytochemistry | FCM - Flow Cytometry | ELISA - Enzyme-linked Immunosorbent Assay | IP - Immunoprecipitation

#20382