

Mouse Monoclonal Antibody to FLT1

Order Information

Catalog#	20387	
Size/Concentration	100µl	50µl
Price(¥)	2180	1280

Description

Fms-related tyrosine kinase 1 (vascular endothelial growth factor/vascular permeability factor receptor), also known as FLT1 or VEGFR-1. It is a member of the vascular endothelial growth factor receptor (VEGFR) family. VEGFR family members are receptor tyrosine kinases (RTKs) which contain an extracellular ligand-binding region with seven immunoglobulin (Ig)-like domains, a transmembrane segment, and a tyrosine kinase (TK) domain within the cytoplasmic domain. This protein binds to VEGFR-A, VEGFR-B and placental growth factor and plays an important role in angiogenesis and vasculogenesis. Expression of this receptor is found in vascular endothelial cells, placental trophoblast cells and peripheral blood monocytes. Multiple transcript variants encoding different isoforms have been found for this gene. Isoforms include a full-length transmembrane receptor isoform and shortened, soluble isoforms. The soluble isoforms are associated with the onset of pre-eclampsia.

Specification

Aliases : FLT; VEGFR1

Entrez GeneID : 2321

Swissprot : P17948

clone : 3D10

WB Predicted band size : 100kDa

Host/Isotype : Mouse IgG1

Storage : Store at 4°C short term. Aliquot and store at -20°C long term. Avoid freeze/thaw cycles.

Species Reactivity : Human

Immunogen : Purified recombinant extracellular fragment of human FLT1 fused with hIgGFc tag expressed in HEK293 cells.

Formulation : Ascitic fluid containing 0.03% sodium azide.

Application

ELISA	1/10000
-------	---------

References

1. Mol Med. 2006 Jul-Aug;12(7-8):127-36.
2. Oncogene. 1997 May 29;14(21):2553-61.

Call 1-510-860-4615
+86-19375157864
Email Info@ProMab.com
Web www.ProMab.com
www.ProMab.cn

Protocol

WB - www.promab.com/protocol/wb.html
IHC - www.promab.com/protocol/ihc.html
ICC - www.promab.com/protocol/icc.html
HCM - www.promab.com/protocol/hcm.html

Antigen Sequence is available upon request.

Products and Services

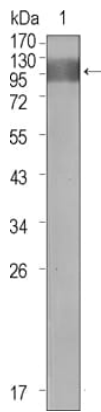
- Mouse Monoclonal Antibody
- Rat Monoclonal Antibody
- Human Antibody
- Hybridoma Sequencing
- Polyclonal Antibody

For Research Only

Application Key:WB - Western Blot | IHC - Immunohistochemistry | ICC - Immunocytochemistry | FCM - Flow Cytometry | ELISA - Enzyme-linked Immunosorbent Assay | IP - Immunoprecipitation

#20387

Mouse Monoclonal Antibody to FLT1



Western blot analysis using FLT1 mouse mAb against extracellular domain of human FLT1.

For Research Only

Application Key: WB - Western Blot | IHC - Immunohistochemistry | ICC - Immunocytochemistry | FCM - Flow Cytometry | ELISA - Enzyme-linked Immunosorbent Assay | IP - Immunoprecipitation

#20387