

Mouse Monoclonal Antibody to CER1

Order Information

Catalog#	20391	
Size/Concentration	100µl	50µl
Price(¥)	2180	1280

Description

CER1: cerberus 1, cysteine knot superfamily, homolog (Xenopus laevis). It is a cytokine member of the cysteine knot superfamily, characterized by nine conserved cysteines and a cysteine knot region. The cerberus-related cytokines, together with Dan and DRM/Gremlin, represent a group of bone morphogenetic protein (BMP) antagonists that can bind directly to BMPs and inhibit their activity.

Specification

Aliases : DAND4

Entrez GeneID : 9350

Swissprot : O95813

clone : 9D6

WB Predicted band size : 30kDa

Host/Isotype : Mouse IgG1

Storage : Store at 4°C short term. Aliquot and store at -20°C long term. Avoid freeze/thaw cycles.

Species Reactivity : Human

Immunogen : Purified recombinant fragment of human CER1 expressed in E. Coli.

Formulation : Ascitic fluid containing 0.03% sodium azide.

Application

IHC	1/200 - 1/1000
ELISA	1/10000

References

1. Dev Biol. 1998 Feb 15;194(2):135-51.
2. Growth Factors. 2004 Dec;22(4):233-41.
3. PLoS One. 2009;4(4):e5302.

Call 1-510-860-4615
+86-19375157864
Email Info@ProMab.com
Web www.ProMab.com
www.ProMab.cn

Protocol

WB - www.promab.com/protocol/wb.html
IHC - www.promab.com/protocol/ihc.html
ICC - www.promab.com/protocol/icc.html
HCM - www.promab.com/protocol/hcm.html

Antigen Sequence is available upon request.

Products and Services

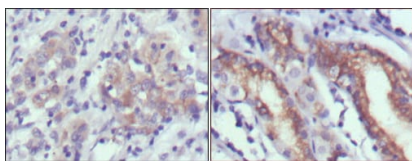
- Mouse Monoclonal Antibody
- Rat Monoclonal Antibody
- Human Antibody
- Hybridoma Sequencing
- Polyclonal Antibody

For Research Only

Application Key:WB - Western Blot | IHC - Immunohistochemistry | ICC - Immunocytochemistry | FCM - Flow Cytometry | ELISA - Enzyme-linked Immunosorbent Assay | IP - Immunoprecipitation

#20391

Mouse Monoclonal Antibody to CER1



Immunohistochemical analysis of paraffin-embedded human gastric cancer (left) and normal gastric tissues (right) using CER1 mouse mAb with DAB staining.

For Research Only

Application Key: WB - Western Blot | IHC - Immunohistochemistry | ICC - Immunocytochemistry | FCM - Flow Cytometry | ELISA - Enzyme-linked Immunosorbent Assay | IP - Immunoprecipitation

#20391