

Mouse Monoclonal Antibody to KDR

Order Information

Catalog#	20394	
Size/Concentration	100µl	50µl
Price(¥)	2180	1280

Description

KDR has also been designated as VEGFR-2 (Vascular endothelial growth factor receptor 2), CD309 (cluster of differentiation 309) and Flk1 (fetal liver kinase 1). Vascular endothelial growth factor (VEGF) is a major growth factor for endothelial cells. KDR is one of the two receptors of the VEGF. This receptor, known as kinase insert domain receptor, is a type III receptor tyrosine kinase. It functions as the main mediator of VEGF-induced endothelial proliferation, survival, migration, tubular morphogenesis and sprouting. The signalling and trafficking of this receptor are regulated by multiple factors, including Rab GTPase, P2Y purine nucleotide receptor, integrin alphaVbeta3, T-cell protein tyrosine phosphatase, etc.. Mutations of this gene are implicated in infantile capillary hemangiomas.

Specification

Aliases : FLK1; CD309; VEGFR; VEGFR2

Entrez GeneID : 3791

Swissprot : P35968

clone : 4B4

WB Predicted band size : 152kDa

Host/Isotype : Mouse IgG1

Storage : Store at 4°C short term. Aliquot and store at -20°C long term. Avoid freeze/thaw cycles.

Species Reactivity : Human

Immunogen : Purified recombinant extracellular fragment of human KDR (aa20-764) fused with hlgGfc tag expressed in HEK293 cells.

Formulation : Ascitic fluid containing 0.03% sodium azide.

Application

ICC	1/200 - 1/1000
FCM	1/200 - 1/400
ELISA	1/10000

References

1. Blood. 2004 Aug 1;104(3):788-94.
2. FEBS Lett. 2002 Feb 13;512(1-3):107-10.
3. EMBO J. 2001 Jun 1;20(11):2768-78.

Call 1-510-860-4615

+86-19375157864

Email Info@ProMab.com

Web www.ProMab.com

www.ProMab.cn

Protocol

WB - www.promab.com/protocol/wb.html

IHC - www.promab.com/protocol/ihc.html

ICC - www.promab.com/protocol/icc.html

HCM - www.promab.com/protocol/hcm.html

Antigen Sequence is available upon request.

Products and Services

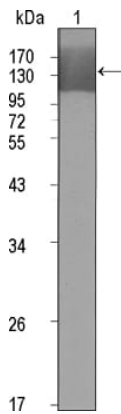
- Mouse Monoclonal Antibody
- Rat Monoclonal Antibody
- Human Antibody
- Hybridoma Sequencing
- Polyclonal Antibody

For Research Only

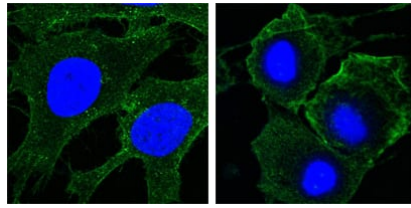
Application Key:WB - Western Blot | IHC - Immunohistochemistry | ICC - Immunocytochemistry | FCM - Flow Cytometry | ELISA - Enzyme-linked Immunosorbent Assay | IP - Immunoprecipitation

#20394

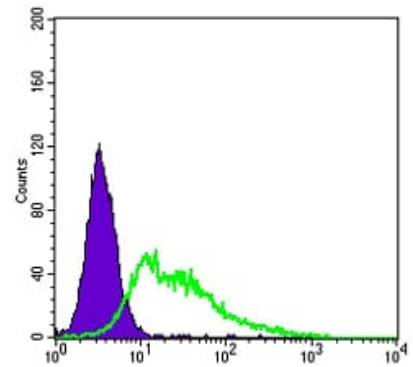
Mouse Monoclonal Antibody to KDR



Western blot analysis using KDR mouse mAb against extracellular domain of human KDR (aa20-764).



Confocal Immunofluorescence analysis of HeLa (left) and HepG2 (right) cells using KDR mouse mAb (green). Blue: DRAQ5 fluorescent DNA dye.



Flow cytometric analysis of HepG2 cells using KDR mouse mAb (green) and negative control (purple).

For Research Only

Application Key: WB - Western Blot | IHC - Immunohistochemistry | ICC - Immunocytochemistry | FCM - Flow Cytometry | ELISA - Enzyme-linked Immunosorbent Assay | IP - Immunoprecipitation

#20394