

# Mouse Monoclonal Antibody to WNT10B

## Order Information

Catalog#	20395	
Size/Concentration	100µl	50µl
Price(¥)	2180	1280

## Description

WNT10B: wingless-type MMTV integration site family, member 10B. The WNT family consists of structurally related secreted signaling proteins. These proteins have been implicated in oncogenesis and in several developmental processes, including regulation of cell fate and patterning during embryogenesis. WNT10B is a member of the WNT gene family. It may be involved in breast cancer, and its protein signaling is likely a molecular switch that governs adipogenesis. This protein is 96% identical to the mouse Wnt10B protein at the amino acid level. The WNT10B gene is clustered with another family member, WNT1, in the chromosome 12q13 region.

## Specification

Aliases : SHFM6; WNT-12

Entrez GeneID : 7480

Swissprot : O00744

clone : 5A7

WB Predicted band size : 43kDa

Host/Isotype : Mouse IgG1

Storage : Store at 4°C short term. Aliquot and store at -20°C long term. Avoid freeze/thaw cycles.

Species Reactivity : Human

Immunogen : Purified recombinant fragment of human WNT10B expressed in E. Coli.

Formulation : Ascitic fluid containing 0.03% sodium azide.

## Application

WB	1/500 - 1/2000
IHC	1/200 - 1/1000
ICC	1/200 - 1/1000
ELISA	1/10000

## References

1. Oncogene. 1997 Mar 13;14(10):1249-53.
2. Int J Oncol. 2001 Dec;19(6):1187-92

Call 1-510-860-4615  
+86-19375157864  
Email [Info@ProMab.com](mailto:Info@ProMab.com)  
Web [www.ProMab.com](http://www.ProMab.com)  
[www.ProMab.cn](http://www.ProMab.cn)

## Protocol

WB - [www.promab.com/protocol/wb.html](http://www.promab.com/protocol/wb.html)  
IHC - [www.promab.com/protocol/ihc.html](http://www.promab.com/protocol/ihc.html)  
ICC - [www.promab.com/protocol/icc.html](http://www.promab.com/protocol/icc.html)  
HCM - [www.promab.com/protocol/hcm.html](http://www.promab.com/protocol/hcm.html)

**Antigen Sequence** is available upon request.

## Products and Services

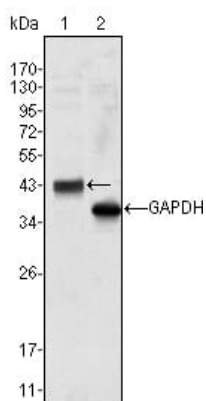
- Mouse Monoclonal Antibody
- Rat Monoclonal Antibody
- Human Antibody
- Hybridoma Sequencing
- Polyclonal Antibody

**For Research Only**

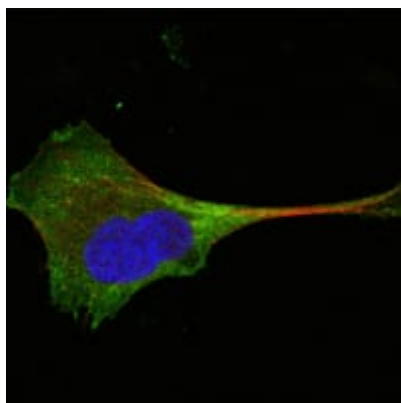
**Application Key:** WB - Western Blot | IHC - Immunohistochemistry | ICC - Immunocytochemistry | FCM - Flow Cytometry | ELISA - Enzyme-linked Immunosorbent Assay | IP - Immunoprecipitation

# #20395

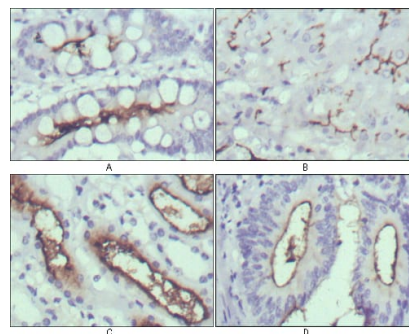
# Mouse Monoclonal Antibody to WNT10B



Western blot analysis using WNT10B mouse mAb against Hela cell lysate (1).



Confocal Immunofluorescence analysis of PANC-1 cells using WNT10B mouse mAb (green). Red: Actin filaments have been labeled with Alexa Fluor-555 phalloidin. Blue: DRAQ5 fluorescent DNA dye.



Immunohistochemical analysis of paraffin-embedded human normal stomach (A), normal liver (B), normal kidney (C) and rectum cancer tissues (D) using WNT10B mouse mAb with DAB staining.

**For Research Only**

**Application Key:** WB - Western Blot | IHC - Immunohistochemistry | ICC - Immunocytochemistry | FCM - Flow Cytometry | ELISA - Enzyme-linked Immunosorbent Assay | IP - Immunoprecipitation

**#20395**