

Mouse Monoclonal Antibody to eNOS

Order Information

Catalog#	20397	
Size/Concentration	100µl	50µl
Price(¥)	2180	1280

Description

Endothelial nitric-oxide synthase (eNOS), also known as NOS3, it is an important enzyme in the cardiovascular system. It is a reactive free radical which acts as a biologic mediator in several processes, including neurotransmission and antimicrobial and antitumoral activities. Nitric oxide is synthesized from L-arginine by nitric oxide synthases. Variations in this gene are associated with susceptibility to coronary spasm.

Specification

Aliases : ECNOS; NOS3

Entrez GeneID : 4846

Swissprot : P29474

clone : 6H2

WB Predicted band size : 133kDa

Host/Isotype : Mouse IgG1

Storage : Store at 4°C short term. Aliquot and store at -20°C long term. Avoid freeze/thaw cycles.

Species Reactivity : Human

Immunogen : Purified recombinant fragment of human eNOS expressed in E. Coli.

Formulation : Ascitic fluid containing 0.03% sodium azide.

Application

IHC	1/200 - 1/1000
ELISA	1/10000

References

1. Nature. 1999 Jun 10;399(6736):601-5.
2. Oncol Rep. 2004 Nov;12(5):1007-11.
3. Breast Cancer Res Treat. 2008 May;109(1):181-2.

Call 1-510-860-4615

+86-19375157864

Email Info@ProMab.com

Web www.ProMab.com

www.ProMab.cn

Protocol

WB - www.promab.com/protocol/wb.html

IHC - www.promab.com/protocol/ihc.html

ICC - www.promab.com/protocol/icc.html

HCM - www.promab.com/protocol/hcm.html

Antigen Sequence is available upon request.

Products and Services

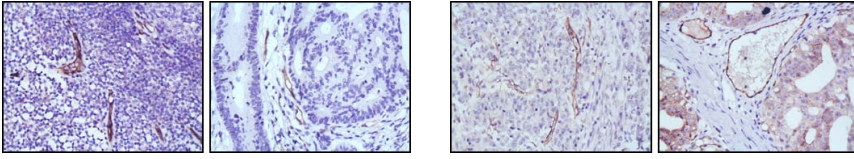
- Mouse Monoclonal Antibody
- Rat Monoclonal Antibody
- Human Antibody
- Hybridoma Sequencing
- Polyclonal Antibody

For Research Only

Application Key: WB - Western Blot | IHC - Immunohistochemistry | ICC - Immunocytochemistry | FCM - Flow Cytometry | ELISA - Enzyme-linked Immunosorbent Assay | IP - Immunoprecipitation

#20397

Mouse Monoclonal Antibody to eNOS



Immunohistochemical analysis of paraffin-embedded human lymph node (left) and colon cancer (right) tissues using eNOS mouse mAb with DAB staining.

Immunohistochemical analysis of paraffin-embedded human stomach cancer (left) and ovary cancer (right) tissues using eNOS mouse mAb with DAB staining.

For Research Only

Application Key: WB - Western Blot | IHC - Immunohistochemistry | ICC - Immunocytochemistry | FCM - Flow Cytometry | ELISA - Enzyme-linked Immunosorbent Assay | IP - Immunoprecipitation

#20397