

# Mouse Monoclonal Antibody to PTEN

## Order Information

Catalog#	20399	
Size/Concentration	100µl	50µl
Price(¥)	2180	1280

## Description

PTEN (phosphatase and tensin homolog) was identified as a tumor suppressor that is mutated in a large number of cancers at high frequency. This protein is a phosphatidylinositol-3,4,5-trisphosphate 3-phosphatase. It contains a tensin like domain as well as a catalytic domain similar to that of the dual specificity protein tyrosine phosphatases. Unlike most of the protein tyrosine phosphatases, this protein preferentially dephosphorylates phosphoinositide substrates. It negatively regulates intracellular levels of phosphatidylinositol-3,4,5-trisphosphate in cells and functions as a tumor suppressor by negatively regulating AKT/PKB signaling pathway.

## Specification

Aliases : BZS; MHAM; TEP1; PTEN1

Entrez GeneID : 5728

Swissprot : P60484

clone : 1B8

WB Predicted band size : 54kDa

Host/Isotype : Mouse IgG1

Storage : Store at 4°C short term. Aliquot and store at -20°C long term. Avoid freeze/thaw cycles.

Species Reactivity : Human, Mouse

Immunogen : Purified recombinant fragment of PTEN expressed in E. Coli.

Formulation : Ascitic fluid containing 0.03% sodium azide.

## Application

WB	1/500 - 1/2000
ICC	1/200 - 1/1000
FCM	1/200 - 1/400
ELISA	1/10000

## References

1. Nat Genet. 1998 Aug;19(4):348-55.
2. Oncogene. 1999 May 20;18(20):3181-5.
3. Eur J Immunol. 2002 Apr;32(4):1196-204.

Call 1-510-860-4615  
+86-19375157864  
Email [Info@ProMab.com](mailto:Info@ProMab.com)  
Web [www.ProMab.com](http://www.ProMab.com)  
[www.ProMab.cn](http://www.ProMab.cn)

## Protocol

WB - [www.promab.com/protocol/wb.html](http://www.promab.com/protocol/wb.html)  
IHC - [www.promab.com/protocol/ihc.html](http://www.promab.com/protocol/ihc.html)  
ICC - [www.promab.com/protocol/icc.html](http://www.promab.com/protocol/icc.html)  
HCM - [www.promab.com/protocol/hcm.html](http://www.promab.com/protocol/hcm.html)

**Antigen Sequence** is available upon request.

## Products and Services

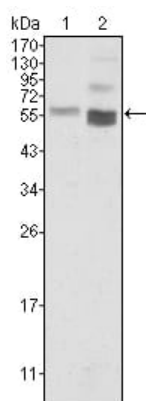
- Mouse Monoclonal Antibody
- Rat Monoclonal Antibody
- Human Antibody
- Hybridoma Sequencing
- Polyclonal Antibody

**For Research Only**

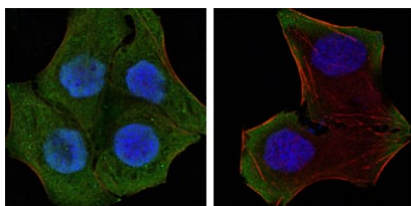
**Application Key:** WB - Western Blot | IHC - Immunohistochemistry | ICC - Immunocytochemistry | FCM - Flow Cytometry | ELISA - Enzyme-linked Immunosorbent Assay | IP - Immunoprecipitation

# #20399

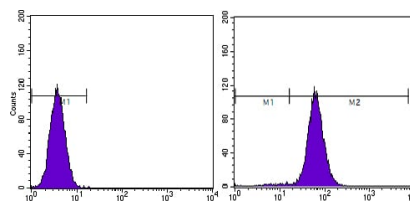
# Mouse Monoclonal Antibody to PTEN



Western blot analysis using PTEN mouse mAb against HeLa (1) and NIH/3T3 (2) cell lysate.



Confocal Immunofluorescence analysis of HeLa (left) and HepG2 (right) cells using PTEN mouse mAb (green). Red: Actin filaments have been labeled with DY-554 phalloidin. Blue: DRAQ5 fluorescent DNA dye.



Flow cytometric analysis of HeLa cells using PTEN mouse mAb (right) and negative control (left).

**For Research Only**

**Application Key:** WB - Western Blot | IHC - Immunohistochemistry | ICC - Immunocytochemistry | FCM - Flow Cytometry | ELISA - Enzyme-linked Immunosorbent Assay | IP - Immunoprecipitation

#20399