

Mouse Monoclonal Antibody to GTF2B

Order Information

Catalog#	20420	
Size/Concentration	100µl	50µl
Price(¥)	2180	1280

Description

This gene encodes the general transcription factor IIB, one of the ubiquitous factors required for transcription initiation by RNA polymerase II. The protein localizes to the nucleus where it forms a complex (the DAB complex) with transcription factors IID and IIA. Transcription factor IIB serves as a bridge between IID, the factor which initially recognizes the promoter sequence, and RNA polymerase II.

Specification

Aliases : TF2B; TFIIB; GTF2B

Entrez GeneID : 2959

Swissprot : Q00403

clone : 4C1

WB Predicted band size : 34.8kDa

Host/Isotype : Mouse IgG1

Storage : Store at 4°C short term. Aliquot and store at -20°C long term. Avoid freeze/thaw cycles.

Species Reactivity : Human, Monkey

Immunogen : Purified recombinant fragment of human GTF2B expressed in E. Coli.

Formulation : Ascitic fluid containing 0.03% sodium azide.

Application

WB	1/500 - 1/2000
ELISA	1/10000

References

1. Biochem Biophys Res Commun. 2004 Jul 16;320(1):1-6.
2. Front Biosci. 2004 Sep 1;9:2388-413.

Call 1-510-860-4615

+86-19375157864

Email Info@ProMab.com

Web www.ProMab.com

www.ProMab.cn

Protocol

WB - www.promab.com/protocol/wb.html






IHC - www.promab.com/protocol/ihc.html

ICC - www.promab.com/protocol/icc.html

HCM - www.promab.com/protocol/hcm.html

Antigen Sequence is available upon request.

Products and Services

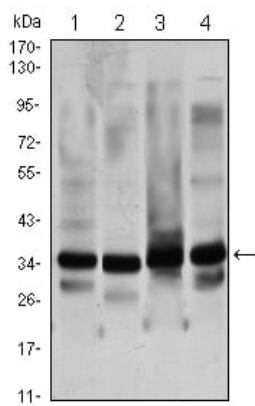
-  Mouse Monoclonal Antibody
-  Rat Monoclonal Antibody
-  Human Antibody
-  Hybridoma Sequencing
-  Polyclonal Antibody

For Research Only

Application Key: WB - Western Blot | IHC - Immunohistochemistry | ICC - Immunocytochemistry | FCM - Flow Cytometry | ELISA - Enzyme-linked Immunosorbent Assay | IP - Immunoprecipitation

#20420

Mouse Monoclonal Antibody to GTF2B



Western blot analysis using GTF2B mouse mAb against HeLa (1), NIH/3T3 (2), COS7 (3) and A431 (4) cell lysate.

For Research Only

Application Key: WB - Western Blot | IHC - Immunohistochemistry | ICC - Immunocytochemistry | FCM - Flow Cytometry | ELISA - Enzyme-linked Immunosorbent Assay | IP - Immunoprecipitation

#20420