

# Mouse Monoclonal Antibody to TLR2

## Order Information

|                    |       |      |
|--------------------|-------|------|
| Catalog#           | 20424 |      |
| Size/Concentration | 100µl | 50µl |
| Price(¥)           | 2180  | 1280 |

## Description

The protein encoded by this gene is a member of the Toll-like receptor (TLR) family which plays a fundamental role in pathogen recognition and activation of innate immunity. TLRs are highly conserved from Drosophila to humans and share structural and functional similarities. They recognize pathogen-associated molecular patterns (PAMPs) that are expressed on infectious agents, and mediate the production of cytokines necessary for the development of effective immunity. The various TLRs exhibit different patterns of expression. This gene is expressed most abundantly in peripheral blood leukocytes, and mediates host response to Gram-positive bacteria and yeast via stimulation of NF-kappaB.

## Specification

|                        |  |
|------------------------|--|
| Aliases                | : TIL4; CD282; TLR2  |
| Entrez GeneID          | : 7097   |
| Swissprot              | : O60603   |
| clone                  | : 2D6  |
| WB Predicted band size | : 100kDa   |
| Host/Isotype           | : Mouse IgG1   |
| Antibody Type          | : Primary antibody   |
| Storage                | : Store at 4°C short term. Aliquot and store at -20°C long term. Avoid freeze/thaw cycles. |
| Species Reactivity     | : Human  |
| Immunogen              | : Purified recombinant fragment of human TLR2 expressed in E. Coli.                        |
| Formulation            | : Ascitic fluid containing 0.03% sodium azide.   |

## Application

|       |                |
|-------|----------------|
| WB    | 1/500 - 1/2000 |
| ELISA | 1/10000        |

## References

1. Ginek Pol. 2009 Dec;80(12):914-9. Polish.
2. BMC Med Genet. 2010 Mar 2;11:37.

Call 1-510-860-4615  
+86-19375157864  
Email [Info@ProMab.com](mailto:Info@ProMab.com)  
Web [www.ProMab.com](http://www.ProMab.com)  
[www.ProMab.cn](http://www.ProMab.cn)

## Protocol

WB - [www.promab.com/protocol/wb.html](http://www.promab.com/protocol/wb.html)  
IHC - [www.promab.com/protocol/ihc.html](http://www.promab.com/protocol/ihc.html)  
ICC - [www.promab.com/protocol/icc.html](http://www.promab.com/protocol/icc.html)  
HCM - [www.promab.com/protocol/hcm.html](http://www.promab.com/protocol/hcm.html)  
**Antigen Sequence** is available upon request.

## Products and Services

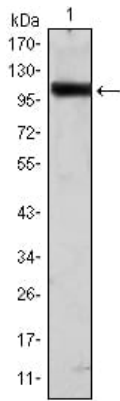
- Mouse Monoclonal Antibody
- Rat Monoclonal Antibody
- Human Antibody
- Hybridoma Sequencing
- Polyclonal Antibody

**For Research Only**

**Application Key:** WB - Western Blot | IHC - Immunohistochemistry | ICC - Immunocytochemistry | FCM - Flow Cytometry | ELISA - Enzyme-linked Immunosorbent Assay | IP - Immunoprecipitation

# #20424

# Mouse Monoclonal Antibody to TLR2



Western blot analysis using TLR2 mouse mAb against HeLa (1) cell lysate.

**For Research Only**

**Application Key:** WB - Western Blot | IHC - Immunohistochemistry | ICC - Immunocytochemistry | FCM - Flow Cytometry | ELISA - Enzyme-linked Immunosorbent Assay | IP - Immunoprecipitation

#20424