

Mouse Monoclonal Antibody to CBX1

Order Information

Catalog#	20425	
Size/Concentration	100µl	50µl
Price(¥)	2180	1280

Description

This gene encodes a highly conserved nonhistone protein, which is a member of the heterochromatin protein family. The protein is enriched in the heterochromatin and associated with centromeres. The protein has a single N-terminal chromodomain which can bind to histone proteins via methylated lysine residues, and a C-terminal chromo shadow-domain (CSD) which is responsible for the homodimerization and interaction with a number of chromatin-associated nonhistone proteins. The protein may play an important role in the epigenetic control of chromatin structure and gene expression. Several related pseudogenes are located on chromosomes 1, 3, and X. Multiple alternatively spliced variants, encoding the same protein, have been identified.

Specification

Aliases : CBX; M31; MOD1; p25beta; HP1-BETA; HP1Hsbeta; HP1Hs-beta; CBX1

Entrez GeneID : 10951

Swissprot : P83916

clone : 5A3

WB Predicted band size : 21kDa

Host/Isotype : Mouse IgG1

Antibody Type : Primary antibody

Storage : Store at 4°C short term. Aliquot and store at -20°C long term. Avoid freeze/thaw cycles.

Species Reactivity : Human, Monkey

Immunogen : Purified recombinant fragment of human CBX1 expressed in E. Coli.

Formulation : Ascitic fluid containing 0.03% sodium azide.

Application

WB	1/500 - 1/2000
ICC	1/200 - 1/1000
FCM	1/200 - 1/400
ELISA	1/10000

References

1. Cell. 2003 Nov 26;115(5):523-35.
2. Cell. 2005 Sep 23;122(6):957-68.
3. Cell. 2006 Nov 3;127(3):635-48.

Call 1-510-860-4615

+86-19375157864

Email Info@ProMab.com

Web www.ProMab.com

www.ProMab.cn

Protocol

WB - www.promab.com/protocol/wb.html

IHC - www.promab.com/protocol/ihc.html

ICC - www.promab.com/protocol/icc.html

HCM - www.promab.com/protocol/hcm.html

Antigen Sequence is available upon request.

Products and Services

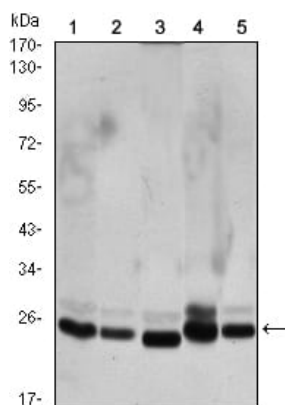
- Mouse Monoclonal Antibody
- Rat Monoclonal Antibody
- Human Antibody
- Hybridoma Sequencing
- Polyclonal Antibody

For Research Only

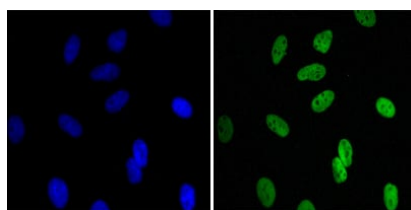
Application Key: WB - Western Blot | IHC - Immunohistochemistry | ICC - Immunocytochemistry | FCM - Flow Cytometry | ELISA - Enzyme-linked Immunosorbent Assay | IP - Immunoprecipitation

#20425

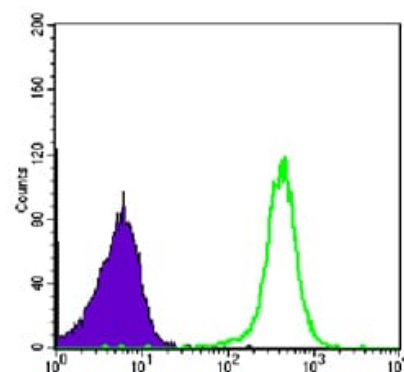
Mouse Monoclonal Antibody to CBX1



Western blot analysis using CBX1 mouse mAb against HeLa (1), COS7 (2), NIH/3T3 (3), A431 (4), and C6 (5) cell lysate.



Immunofluorescence analysis of HeLa cells using CBX1 mouse mAb (green). Blue: DRAQ5 fluorescent DNA dye.



Flow cytometric analysis of COS7 cells using CBX1 mouse mAb (green) and negative control (purple).

For Research Only

Application Key: WB - Western Blot | IHC - Immunohistochemistry | ICC - Immunocytochemistry | FCM - Flow Cytometry | ELISA - Enzyme-linked Immunosorbent Assay | IP - Immunoprecipitation

#20425