

Mouse Monoclonal Antibody to ABL2

Order Information

Catalog#	20429	
Size/Concentration	100µl	50µl
Price(¥)	2180	1280

Description

ABL2 (ARG, Abl-related gene), together with c-Abl, forms the Abl family of mammalian non-receptor tyrosine kinases. ABL2 and c-Abl share 89%, 90 and 93% identity in their SH3, SH2 and tyrosine domain, but only 29% identity in the carboxy-terminal half. The human c-Abl and ABL2 genes are expressed ubiquitously. ABL2 had been detected predominantly in the cytoplasm, whereas c-Abl shows both cytoplasmic and nuclear localization. c-Abl is involved in two different chromosomal translocations present in human leukemias, which generate Bcr-Abl and TEL-Abl. Recently, TEL-ARG fusion transcripts have also been identified in acute myeloid leukemias (AML). The Abl family kinases may also interact with receptor tyrosine signaling pathways and regulate cellular function such as cell cycle progression, gene transcription and organization of the actin cytoskeletons in neurons.

Specification

Aliases : ARG; ABL2; FLJ22224; FLJ31718; FLJ41441

Entrez GeneID : 27

Swissprot : P42684

clone : 1H1

WB Predicted band size : 128kDa

Host/Isotype : Mouse IgG1

Storage : Store at 4°C short term. Aliquot and store at -20°C long term. Avoid freeze/thaw cycles.

Species Reactivity : Human, Mouse

Immunogen : Purified recombinant fragment of ABL2 expressed in E. Coli.

Formulation : Ascitic fluid containing 0.03% sodium azide.

Application

ICC 1/200 - 1/1000

ELISA 1/10000

References

1. Yoshimi I, Takashi I, Tsuneyuki O, et al. Blood. 2000; 95(6): 2126-2131.
2. Scheijen, B. and Griffin, J.D. Oncogene. 2002; 21:3314-33.

Call 1-510-860-4615

+86-19375157864

Email Info@ProMab.com

Web www.ProMab.com

www.ProMab.cn

Protocol

WB - www.promab.com/protocol/wb.html

IHC - www.promab.com/protocol/ihc.html

ICC - www.promab.com/protocol/icc.html

HCM - www.promab.com/protocol/hcm.html

Antigen Sequence is available upon request.

Products and Services

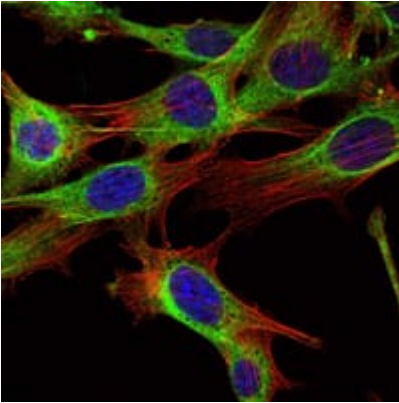
- Mouse Monoclonal Antibody
- Rat Monoclonal Antibody
- Human Antibody
- Hybridoma Sequencing
- Polyclonal Antibody

For Research Only

Application Key: WB - Western Blot | IHC - Immunohistochemistry | ICC - Immunocytochemistry | FCM - Flow Cytometry | ELISA - Enzyme-linked Immunosorbent Assay | IP - Immunoprecipitation

#20429

Mouse Monoclonal Antibody to ABL2



Immunofluorescence analysis of NIH/3T3 cells using ABL2 mouse mAb (green). Blue: DRAQ5 fluorescent DNA dye. Red: Actin filaments have been labeled with Alexa Fluor-555 phalloidin.

For Research Only

Application Key: WB - Western Blot | IHC - Immunohistochemistry | ICC - Immunocytochemistry | FCM - Flow Cytometry | ELISA - Enzyme-linked Immunosorbent Assay | IP - Immunoprecipitation

#20429