

Mouse Monoclonal Antibody to PPP1A

Order Information

Catalog#	20432	
Size/Concentration	100µl	50µl
Price(¥)	2180	1280

Description

The protein encoded by this gene is one of the three catalytic subunits of protein phosphatase 1 (PP1). PP1 is a serine/threonine specific protein phosphatase known to be involved in the regulation of a variety of cellular processes, such as cell division, glycogen metabolism, muscle contractility, protein synthesis, and HIV-1 viral transcription. Increased PP1 activity has been observed in the end stage of heart failure. Studies in both human and mice suggest that PP1 is an important regulator of cardiac function. Mouse studies also suggest that PP1 functions as a suppressor of learning and memory. Three alternatively spliced transcript variants encoding different isoforms have been found for this gene.

Specification

Aliases	: PP-1A; PPP1A; MGC1674; MGC15877; PP1alpha; PPP1CA
Entrez GeneID	: 5499
Swissprot	: P62136
clone	: 6D1
WB Predicted band size	: 38kDa
Host/Isotype	: Mouse IgG1
Antibody Type	: Primary antibody
Storage	: Store at 4°C short term. Aliquot and store at -20°C long term. Avoid freeze/thaw cycles.
Species Reactivity	: Human, Mouse
Immunogen	: Purified recombinant fragment of human PPP1A expressed in E. Coli.
Formulation	: Ascitic fluid containing 0.03% sodium azide.

Application

WB	1/500 - 1/2000
ELISA	1/10000

References

1. EMBO J. 2007 Mar 21;26(6):1511-21.
2. J Biol Chem. 2007 Jun 15;282(24):17806-15.
3. Mol Cell. 2007 Jul 20;27(2):262-74.

Call 1-510-860-4615
+86-19375157864
Email Info@ProMab.com
Web www.ProMab.com
www.ProMab.cn

Protocol

WB - www.promab.com/protocol/wb.html
IHC - www.promab.com/protocol/ihc.html
ICC - www.promab.com/protocol/icc.html
HCM - www.promab.com/protocol/hcm.html
Antigen Sequence is available upon request.

Products and Services

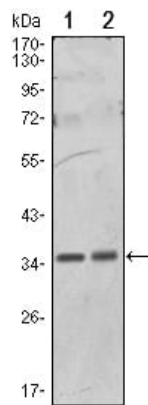
- Mouse Monoclonal Antibody
- Rat Monoclonal Antibody
- Human Antibody
- Hybridoma Sequencing
- Polyclonal Antibody

For Research Only

Application Key: WB - Western Blot | IHC - Immunohistochemistry | ICC - Immunocytochemistry | FCM - Flow Cytometry | ELISA - Enzyme-linked Immunosorbent Assay | IP - Immunoprecipitation

#20432

Mouse Monoclonal Antibody to PPP1A



Western blot analysis using PPP1A mouse mAb against HeLa (1) and NIH/3T3 (2) cell lysate.

For Research Only

Application Key: WB - Western Blot | IHC - Immunohistochemistry | ICC - Immunocytochemistry | FCM - Flow Cytometry | ELISA - Enzyme-linked Immunosorbent Assay | IP - Immunoprecipitation

#20432