

Mouse Monoclonal Antibody to TBLR1

Order Information

Catalog#	20435	
Size/Concentration	100µl	50µl
Price(¥)	2180	1280

Description

The protein encoded by this gene has sequence similarity with members of the WD40 repeat-containing protein family. The WD40 group is a large family of proteins, which appear to have a regulatory function. It is believed that the WD40 repeats mediate protein-protein interactions and members of the family are involved in signal transduction, RNA processing, gene regulation, vesicular trafficking, cytoskeletal assembly and may play a role in the control of cytotypic differentiation.

Specification

Aliases : C21; DC42; IRA1; TBL1XR1
 Entrez GeneID : 79718
 Swissprot : Q9BZK7
 clone : 4G1
 WB Predicted band size : 62.4kDa
 Host/Isotype : Mouse IgG1
 Antibody Type : Primary antibody
 Storage : Store at 4°C short term. Aliquot and store at -20°C long term. Avoid freeze/thaw cycles.
 Species Reactivity : Human, Monkey
 Immunogen : Purified recombinant fragment of human TBLR1 expressed in E. Coli.
 Formulation : Ascitic fluid containing 0.03% sodium azide.

Application

WB	1/500 - 1/2000
ELISA	1/10000

References

1. BMC Cell Biol. 2006 Aug 7;7:31.
2. Mol Cell Biol. 2005 Jan;25(1):324-35.

Call 1-510-860-4615
 +86-19375157864
 Email Info@ProMab.com
 Web www.ProMab.com
www.ProMab.cn

Protocol

WB - www.promab.com/protocol/wb.html
 IHC - www.promab.com/protocol/ihc.html
 ICC - www.promab.com/protocol/icc.html
 HCM - www.promab.com/protocol/hcm.html
Antigen Sequence is available upon request.

Products and Services

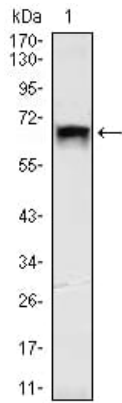
- Mouse Monoclonal Antibody
- Rat Monoclonal Antibody
- Human Antibody
- Hybridoma Sequencing
- Polyclonal Antibody

For Research Only

Application Key: WB - Western Blot | IHC - Immunohistochemistry | ICC - Immunocytochemistry | FCM - Flow Cytometry | ELISA - Enzyme-linked Immunosorbent Assay | IP - Immunoprecipitation

#20435

Mouse Monoclonal Antibody to TBLR1



Western blot analysis using TBLR1 mouse mAb against HEK293 (1) cell lysate.

For Research Only

Application Key: WB - Western Blot | IHC - Immunohistochemistry | ICC - Immunocytochemistry | FCM - Flow Cytometry | ELISA - Enzyme-linked Immunosorbent Assay | IP - Immunoprecipitation

#20435