

Mouse Monoclonal Antibody to PPP1CC

Order Information

| | | |
|--------------------|-------|------|
| Catalog# | 20438 | |
| Size/Concentration | 100µl | 50µl |
| Price(¥) | 2180 | 1280 |

Description

The protein encoded by this gene belongs to the protein phosphatase family, PP1 subfamily. PP1 is an ubiquitous serine/threonine phosphatase that regulates many cellular processes, including cell division. It is expressed in mammalian cells as three closely related isoforms, alpha, beta/delta and gamma, which have distinct localization patterns. This gene encodes the gamma isozyme. Alternatively spliced transcript variants encoding different isoforms have been found for this gene.

Specification

Aliases : PP-1G; PPP1G

Entrez GeneID : 5501

Swissprot : P36873

clone : 3D5C7

WB Predicted band size : 37kDa

Host/Isotype : Mouse IgG1

Antibody Type : Primary antibody

Storage : Store at 4°C short term. Aliquot and store at -20°C long term. Avoid freeze/thaw cycles.

Species Reactivity : Human

Immunogen : Purified recombinant fragment of human PPP1CC expressed in E. Coli.

Formulation : Ascitic fluid containing 0.03% sodium azide.

Application

| | |
|-------|----------------|
| WB | 1/500 - 1/2000 |
| IHC | 1/200 - 1/1000 |
| FCM | 1/200 - 1/400 |
| ELISA | 1/10000 |

References

1. Physiol Genomics. 2011 Sep 8;43(17):981-92.
2. EMBO Rep. 2010 Nov;11(11):883-9.

Call 1-510-860-4615
+86-19375157864
Email Info@ProMab.com
Web www.ProMab.com
www.ProMab.cn

Protocol

WB - www.promab.com/protocol/wb.html
IHC - www.promab.com/protocol/ihc.html
ICC - www.promab.com/protocol/icc.html
HCM - www.promab.com/protocol/hcm.html

Antigen Sequence is available upon request.

Products and Services

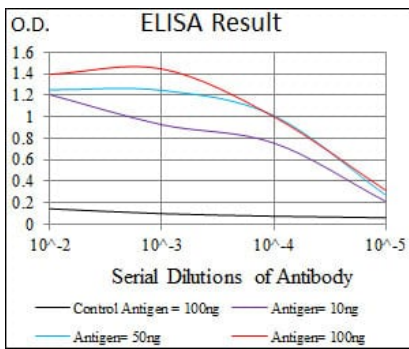
- Mouse Monoclonal Antibody
- Rat Monoclonal Antibody
- Human Antibody
- Hybridoma Sequencing
- Polyclonal Antibody

For Research Only

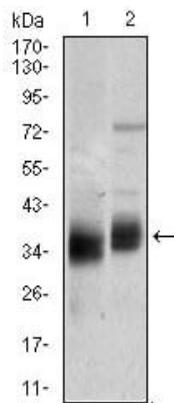
Application Key: WB - Western Blot | IHC - Immunohistochemistry | ICC - Immunocytochemistry | FCM - Flow Cytometry | ELISA - Enzyme-linked Immunosorbent Assay | IP - Immunoprecipitation

#20438

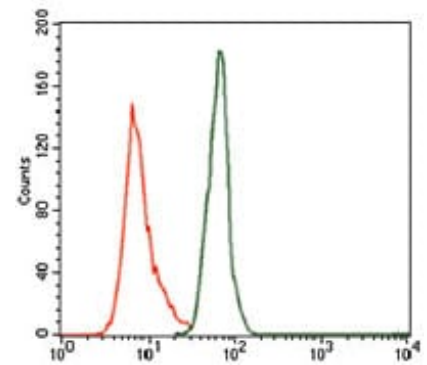
Mouse Monoclonal Antibody to PPP1CC



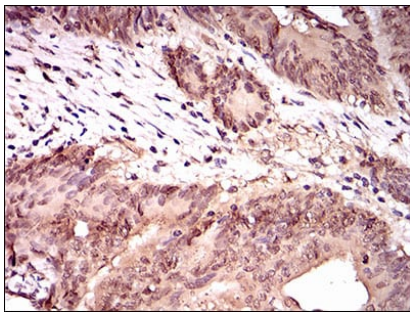
Red: Control Antigen (100ng); Purple: Antigen (10ng); Green: Antigen (50ng); Blue: Antigen (100ng);



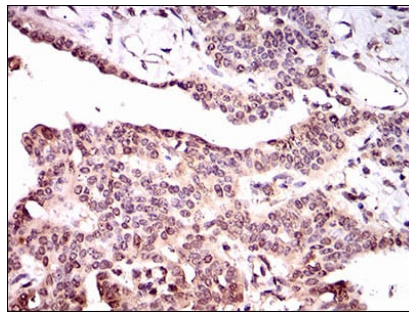
Western blot analysis using PPP1CC mouse mAb against T47D (1) and SKBR-3 (2) cell lysate.



Flow cytometric analysis of MOLT4 cells using PPP1CC mouse mAb (green) and negative control (purple).



Immunohistochemical analysis of paraffin-embedded human colon cancer tissues using PPP1CC mouse mAb with DAB staining.



Immunohistochemical analysis of paraffin-embedded human ovarian cancer tissues using PPP1CC mouse mAb with DAB staining.

For Research Only

Application Key: WB - Western Blot | IHC - Immunohistochemistry | ICC - Immunocytochemistry | FCM - Flow Cytometry | ELISA - Enzyme-linked Immunosorbent Assay | IP - Immunoprecipitation

#20438