

Mouse Monoclonal Antibody to KIAA1967

Order Information

| | | |
|--------------------|-------|------|
| Catalog# | 20439 | |
| Size/Concentration | 100µl | 50µl |
| Price(¥) | 2180 | 1280 |

Description

DBC1 (deleted in breast cancer 1) is a novel transcriptional coactivator that has been suggested to be a critical regulator of tumorigenesis. It has been reported to be strongly related with unfavorable clinical outcome in several cancers, including breast and gastric cancer, and the protein is a key regulator of SIRT1 activity in vivo.

Specification

| | |
|------------------------|--|
| Aliases | : DBC1; DBC-1; NET35; p30DBC; p30 DBC |
| Entrez GeneID | : 57805 |
| Swissprot | : Q8N163 |
| clone | : 1A9G12 |
| WB Predicted band size | : 103kDa |
| Host/Isotype | : Mouse IgG1 |
| Storage | : Store at 4°C short term. Aliquot and store at -20°C long term. Avoid freeze/thaw cycles. |
| Species Reactivity | : Human |
| Immunogen | : Purified recombinant fragment of human KIAA1967 expressed in E. Coli. |
| Formulation | : Ascitic fluid containing 0.03% sodium azide. |

Application

| | |
|-------|----------------|
| WB | 1/500 - 1/2000 |
| IHC | 1/200 - 1/1000 |
| FCM | 1/200 - 1/400 |
| ELISA | 1/10000 |

References

1. J Biol Chem. 2012 Jul 6;287(28):23489-501.
2. Histol Histopathol. 2012 Jan;27(1):49-58.

Call 1-510-860-4615
+86-19375157864
Email Info@ProMab.com
Web www.ProMab.com
www.ProMab.cn

Protocol

WB - www.promab.com/protocol/wb.html
IHC - www.promab.com/protocol/ihc.html
ICC - www.promab.com/protocol/icc.html
HCM - www.promab.com/protocol/hcm.html
Antigen Sequence is available upon request.

Products and Services

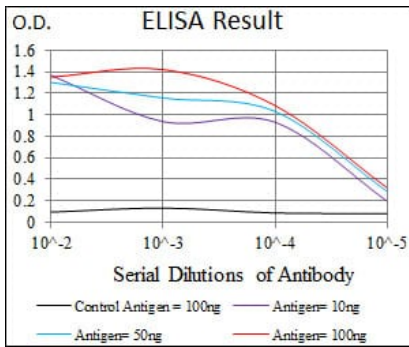
- Mouse Monoclonal Antibody
- Rat Monoclonal Antibody
- Human Antibody
- Hybridoma Sequencing
- Polyclonal Antibody

For Research Only

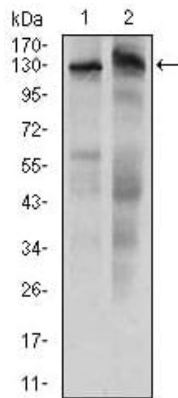
Application Key: WB - Western Blot | IHC - Immunohistochemistry | ICC - Immunocytochemistry | FCM - Flow Cytometry | ELISA - Enzyme-linked Immunosorbent Assay | IP - Immunoprecipitation

#20439

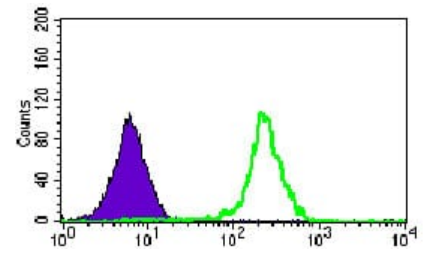
Mouse Monoclonal Antibody to KIAA1967



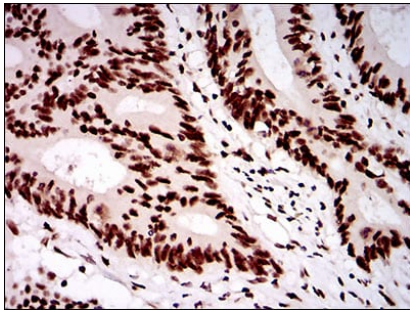
Red: Control Antigen (100ng); Purple: Antigen (10ng); Green: Antigen (50ng); Blue: Antigen (100ng);



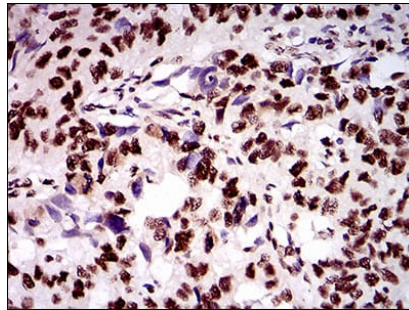
Western blot analysis using KIAA1967 mouse mAb against HeLa (1) and HepG2 (2) cell lysate.



Flow cytometric analysis of HeLa cells using KIAA1967 mouse mAb (green) and negative control (purple).



Immunohistochemical analysis of paraffin-embedded human colon cancer tissues using KIAA1967 mouse mAb with DAB staining.



Immunohistochemical analysis of paraffin-embedded human esophageal cancer tissues using KIAA1967 mouse mAb with DAB staining.

For Research Only

Application Key: WB - Western Blot | IHC - Immunohistochemistry | ICC - Immunocytochemistry | FCM - Flow Cytometry | ELISA - Enzyme-linked Immunosorbent Assay | IP - Immunoprecipitation

#20439