

Mouse Monoclonal Antibody to TBLR1

Order Information

Catalog#	20444	
Size/Concentration	100µl	50µl
Price(¥)	2180	1280

Description

The protein encoded by this gene has sequence similarity with members of the WD40 repeat-containing protein family. The WD40 group is a large family of proteins, which appear to have a regulatory function. It is believed that the WD40 repeats mediate protein-protein interactions and members of the family are involved in signal transduction, RNA processing, gene regulation, vesicular trafficking, cytoskeletal assembly and may play a role in the control of cytotypic differentiation.

Specification

Aliases : C21; DC42; IRA1; TBL1XR1

Entrez GeneID : 79718

Swissprot : Q9BZK7

clone : 5A9G10

WB Predicted band size : 55.5kDa

Host/Isotype : Mouse IgG1

Storage : Store at 4°C short term. Aliquot and store at -20°C long term. Avoid freeze/thaw cycles.

Species Reactivity : Human, Mouse

Immunogen : Purified recombinant fragment of human TBLR1 expressed in E. Coli.

Formulation : Ascitic fluid containing 0.03% sodium azide.

Application

WB	1/500 - 1/2000
IHC	1/200 - 1/1000
FCM	1/200 - 1/400
ELISA	1/10000

References

1. Blood. 2012 May 24;119(21):4949-52.
2. Mol Cell Biol. 2010 Aug;30(16):4006-21.

Call 1-510-860-4615
+86-19375157864
Email Info@ProMab.com
Web www.ProMab.com
www.ProMab.cn

Protocol

WB - www.promab.com/protocol/wb.html

IHC - www.promab.com/protocol/ihc.html

ICC - www.promab.com/protocol/icc.html

HCM - www.promab.com/protocol/hcm.html

Antigen Sequence is available upon request.

Products and Services

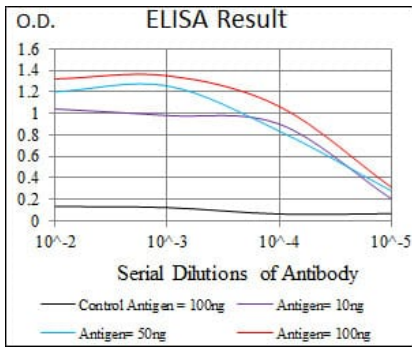
- Mouse Monoclonal Antibody
- Rat Monoclonal Antibody
- Human Antibody
- Hybridoma Sequencing
- Polyclonal Antibody

For Research Only

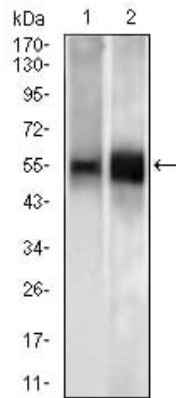
Application Key: WB - Western Blot | IHC - Immunohistochemistry | ICC - Immunocytochemistry | FCM - Flow Cytometry | ELISA - Enzyme-linked Immunosorbent Assay | IP - Immunoprecipitation

#20444

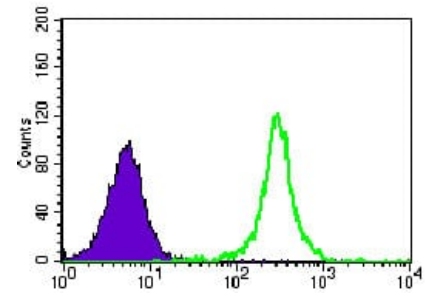
Mouse Monoclonal Antibody to TBLR1



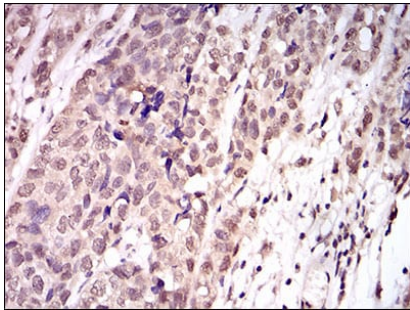
Red: Control Antigen (100ng); Purple: Antigen (10ng); Green: Antigen (50ng); Blue: Antigen (100ng);



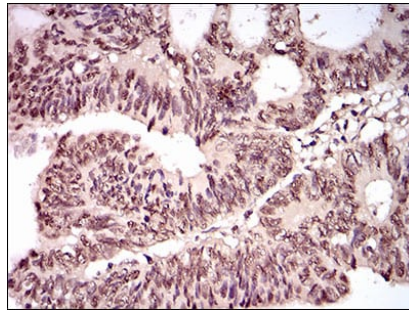
Western blot analysis using TBLR1 mouse mAb against Mouse heart (1) tissue lysate and K562 (2) cell lysate.



Flow cytometric analysis of K562 cells using TBLR1 mouse mAb (green) and negative control (purple).



Immunohistochemical analysis of paraffin-embedded human bladder cancer tissues using TBLR1 mouse mAb with DAB staining.



Immunohistochemical analysis of paraffin-embedded human rectum cancer tissues using TBLR1 mouse mAb with DAB staining.

For Research Only

Application Key: WB - Western Blot | IHC - Immunohistochemistry | ICC - Immunocytochemistry | FCM - Flow Cytometry | ELISA - Enzyme-linked Immunosorbent Assay | IP - Immunoprecipitation

#20444